



July 31, 2015

**Public Health Preparedness and Situational Awareness Report: #2015:29  
Reporting for the week ending 07/25/15 (MMWR Week #29)**

**CURRENT HOMELAND SECURITY THREAT LEVELS**

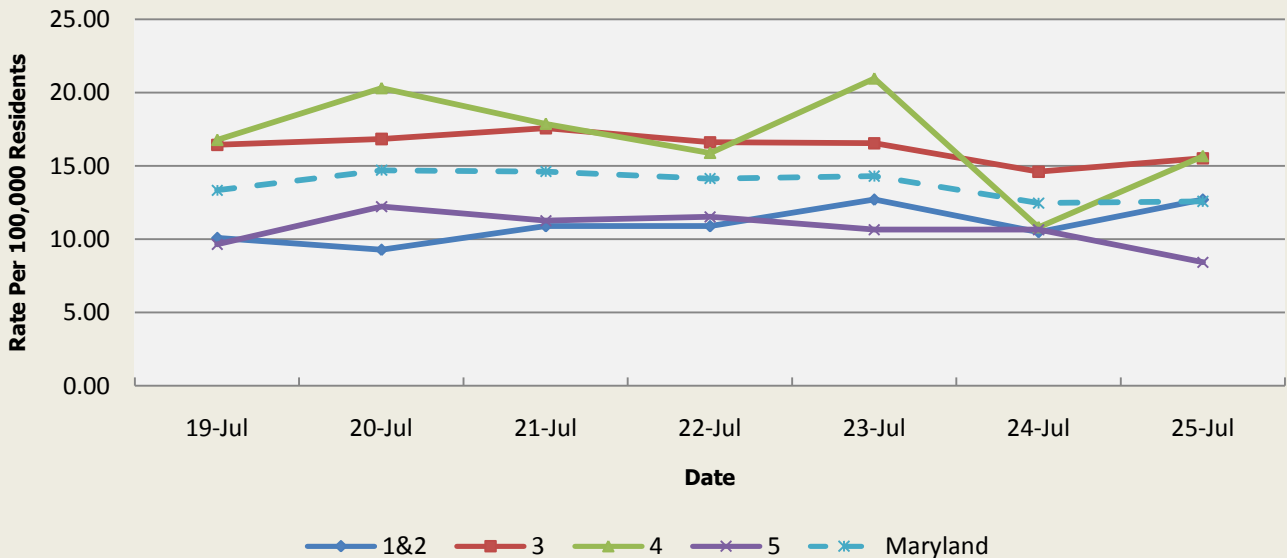
**National: No Active Alerts**  
**Maryland: Level Four (MEMA status)**

**SYNDROMIC SURVEILLANCE REPORTS**

**ESSENCE (Electronic Surveillance System for the Early Notification of Community-based Epidemics):**

Graphical representation is provided for all syndromes (excluding the "Other" category; see Appendix 1) by Health and Medical Regions (See Appendix 2). Emergency department chief complaint data is presented as rates per 100,000 residents using data from the 2010 census.

**Emergency Department Chief Complaints for Gastrointestinal Syndrome  
Rate Per 100,000 Residents**



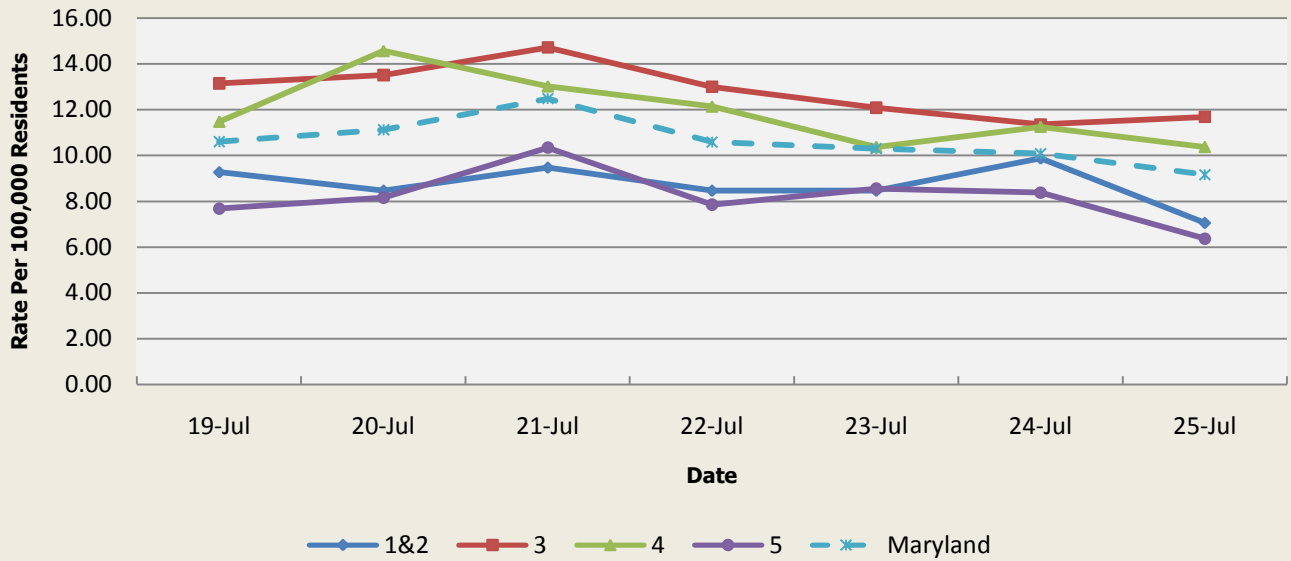
There were no gastrointestinal illness outbreaks reported this week.

**Gastrointestinal Syndrome Baseline Data  
January 1, 2010 - Present**

Health Region	1&2	3	4	5	Maryland
Mean Rate*	12.99	14.34	15.35	10.14	12.69
Median Rate*	12.91	14.07	14.57	9.98	12.50

\* Per 100,000 Residents

**Emergency Department Chief Complaints for Respiratory Syndrome  
Rate Per 100,000 Residents**

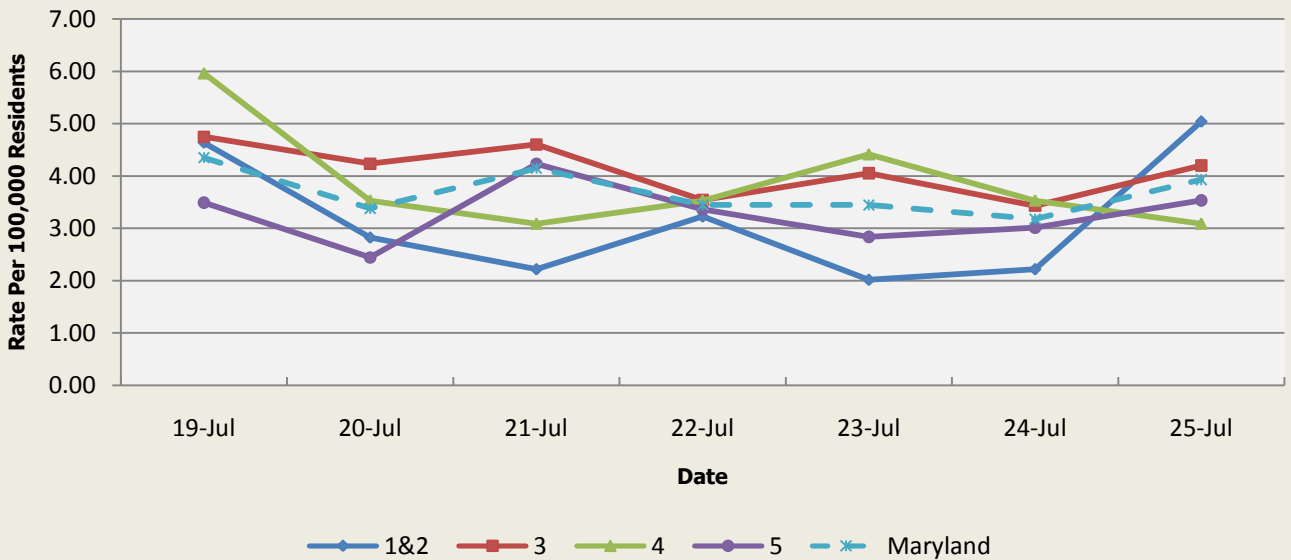


There were two respiratory outbreaks reported this week: 1 outbreak of ILI/pneumonia in a nursing home (Region 5) and 1 outbreak of pneumonia in a nursing home (Region 5).

Respiratory Syndrome Baseline Data January 1, 2010 - Present					
Health Region	1&2	3	4	5	Maryland
Mean Rate*	11.98	13.46	13.79	9.66	11.91
Median Rate*	11.70	12.90	13.25	9.26	11.45

\* Per 100,000 Residents

**Emergency Department Chief Complaints for Fever Syndrome  
Rate Per 100,000 Residents**

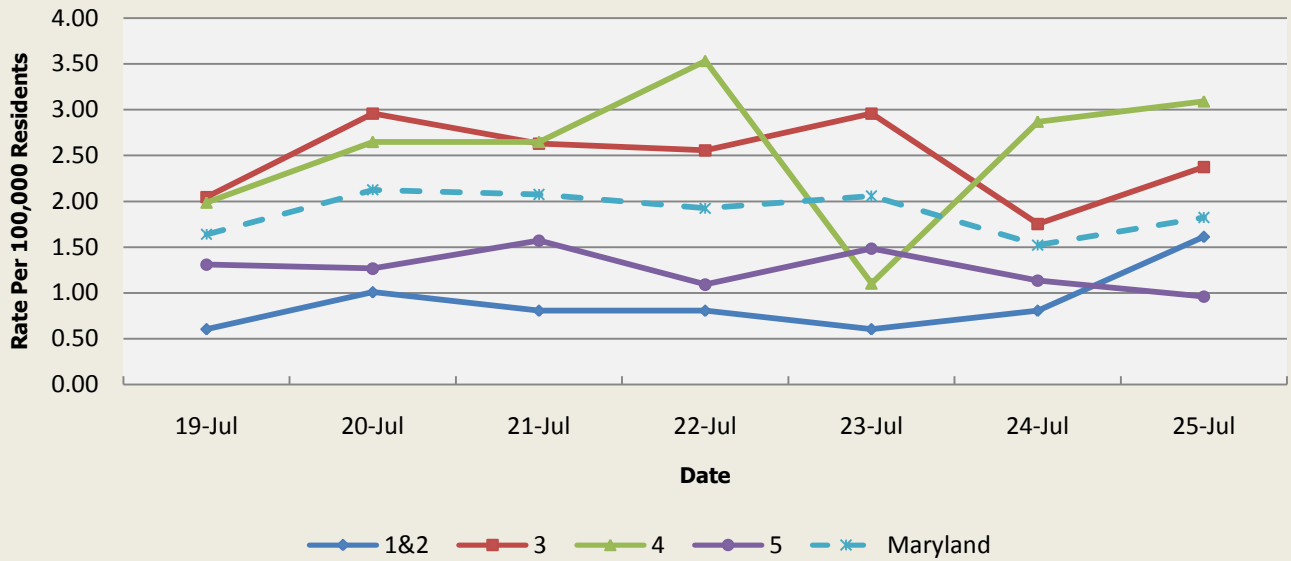


There were no fever outbreaks reported this week.

Fever Syndrome Baseline Data January 1, 2010 - Present					
Health Region	1&2	3	4	5	Maryland
Mean Rate*	3.14	3.66	3.89	3.05	3.40
Median Rate*	3.02	3.51	3.75	2.92	3.26

Per 100,000 Residents

**Emergency Department Chief Complaints for Localized Lesion Syndrome  
Rate Per 100,000 Residents**

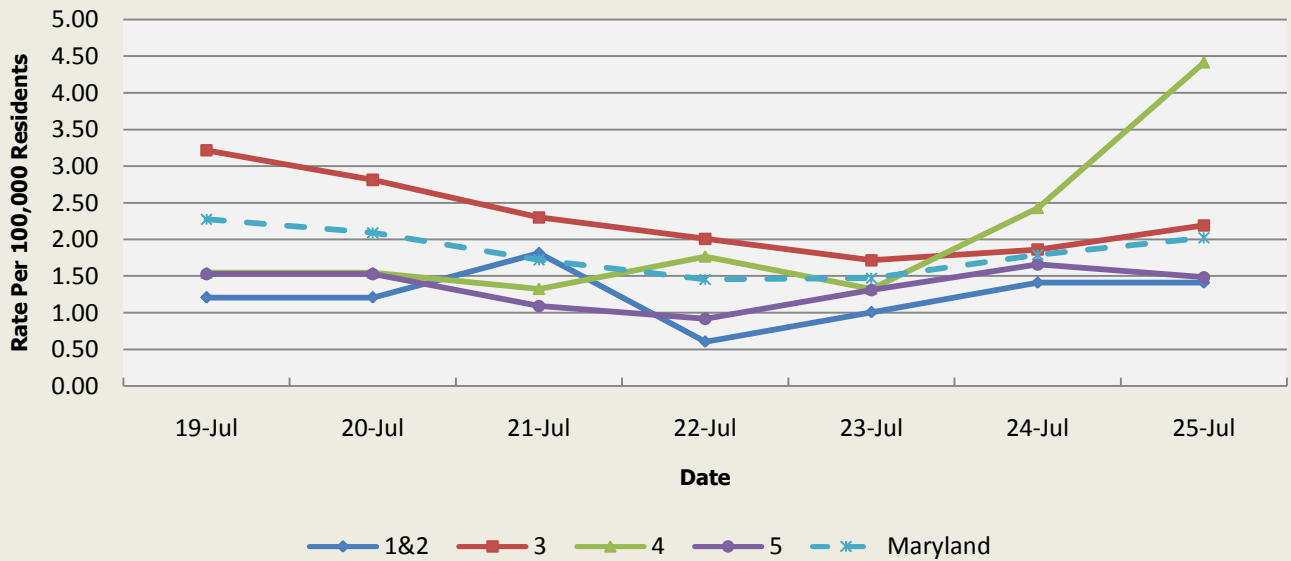


There were no localized lesion outbreaks reported this week.

Localized Lesion Syndrome Baseline Data January 1, 2010 - Present					
Health Region	1&2	3	4	5	Maryland
Mean Rate*	1.11	1.92	2.05	1.00	1.51
Median Rate*	1.01	1.86	1.99	0.96	1.46

\* Per 100,000 Residents

**Emergency Department Chief Complaints for Rash Syndrome  
Rate Per 100,000 Residents**

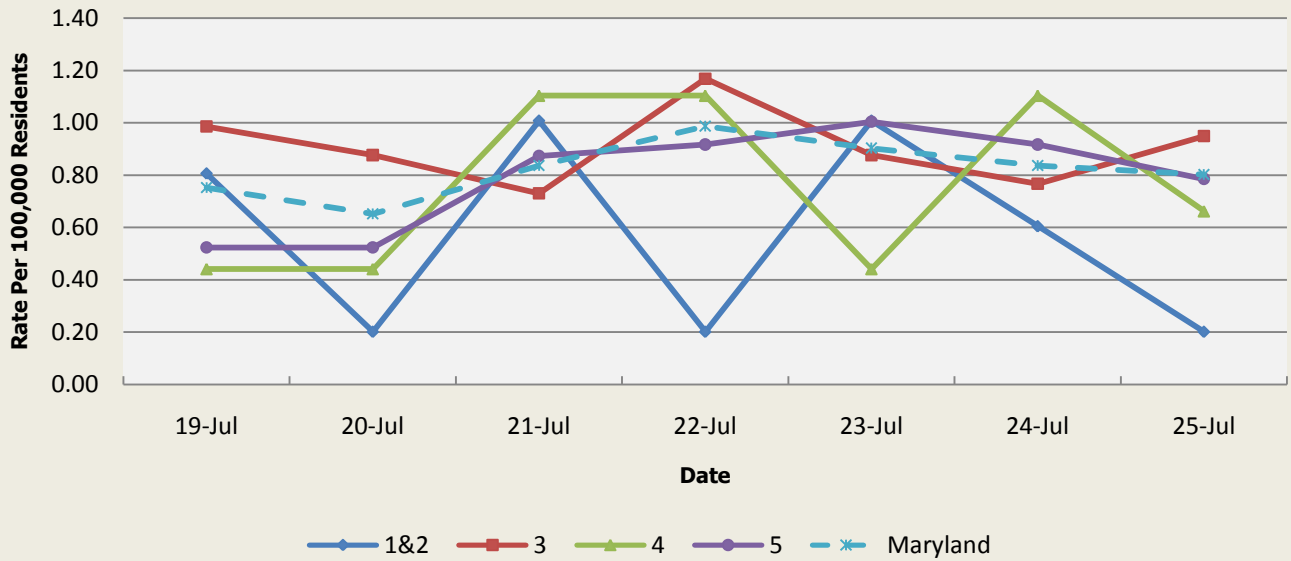


There were two rash illness outbreaks reported this week: 1 outbreak of scabies in a nursing home (Region 3) and 1 outbreak of hand, foot, and mouth disease associated with a daycare center (Region 4).

Rash Syndrome Baseline Data January 1, 2010 - Present					
Health Region	1&2	3	4	5	Maryland
Mean Rate*	1.34	1.73	1.77	1.05	1.44
Median Rate*	1.21	1.64	1.77	1.00	1.39

\* Per 100,000 Residents

**Emergency Department Chief Complaints for Neurological Syndrome  
Rate Per 100,000 Residents**

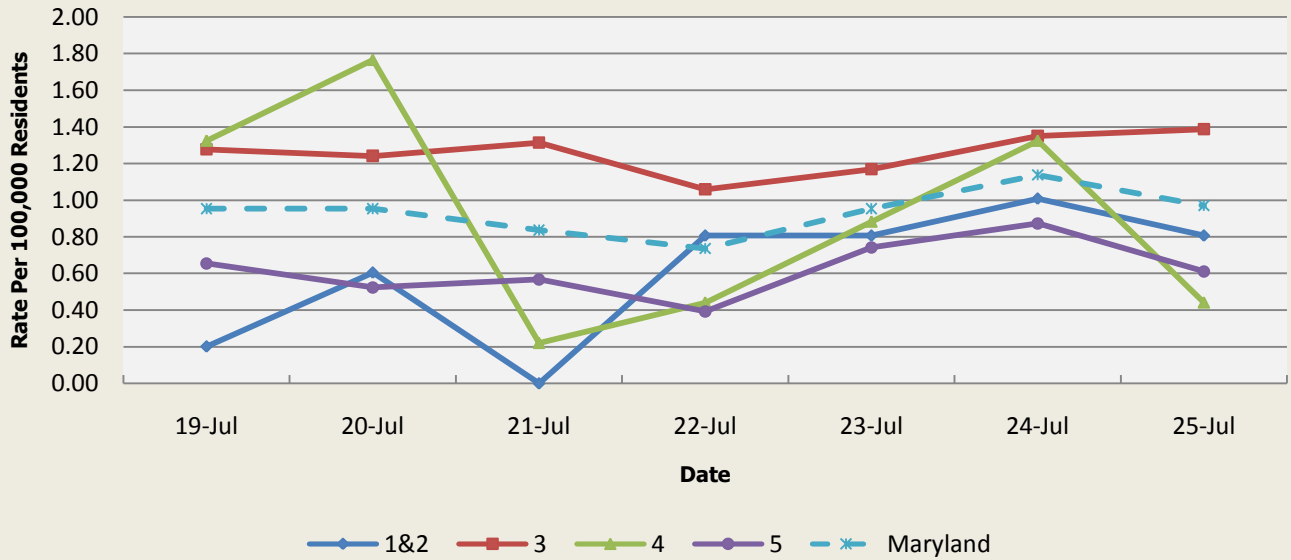


There were no neurological outbreaks reported this week.

Neurological Syndrome Baseline Data January 1, 2010 - Present					
Health Region	1&2	3	4	5	Maryland
Mean Rate*	0.62	0.66	0.62	0.44	0.57
Median Rate*	0.60	0.62	0.66	0.39	0.54

\* Per 100,000 Residents

**Emergency Department Chief Complaints for Severe Illness or Death Syndrome  
Rate Per 100,000 Residents**



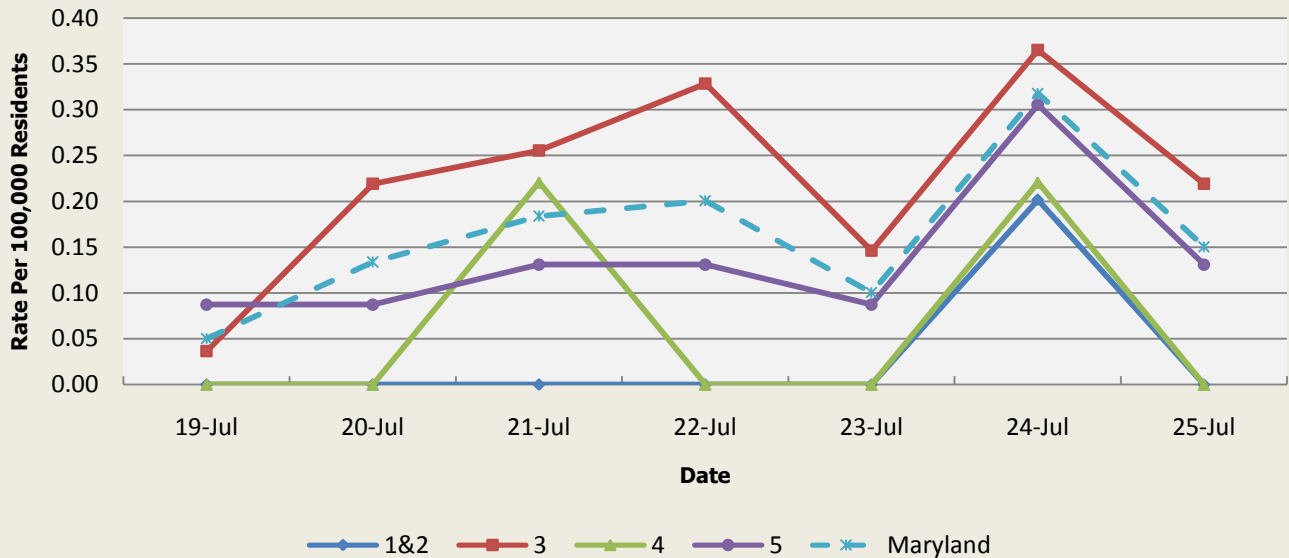
There were no severe illness or death outbreaks reported this week.

Severe Illness or Death Syndrome Baseline Data January 1, 2010 - Present					
Health Region	1&2	3	4	5	Maryland
Mean Rate*	0.75	0.95	0.88	0.42	0.73
Median Rate*	0.81	0.95	0.88	0.39	0.72

\* Per 100,000 Residents

**SYNDROMES RELATED TO CATEGORY A AGENTS**

**Emergency Department Chief Complaints for Botulism-like Syndrome  
Rate Per 100,000 Residents**

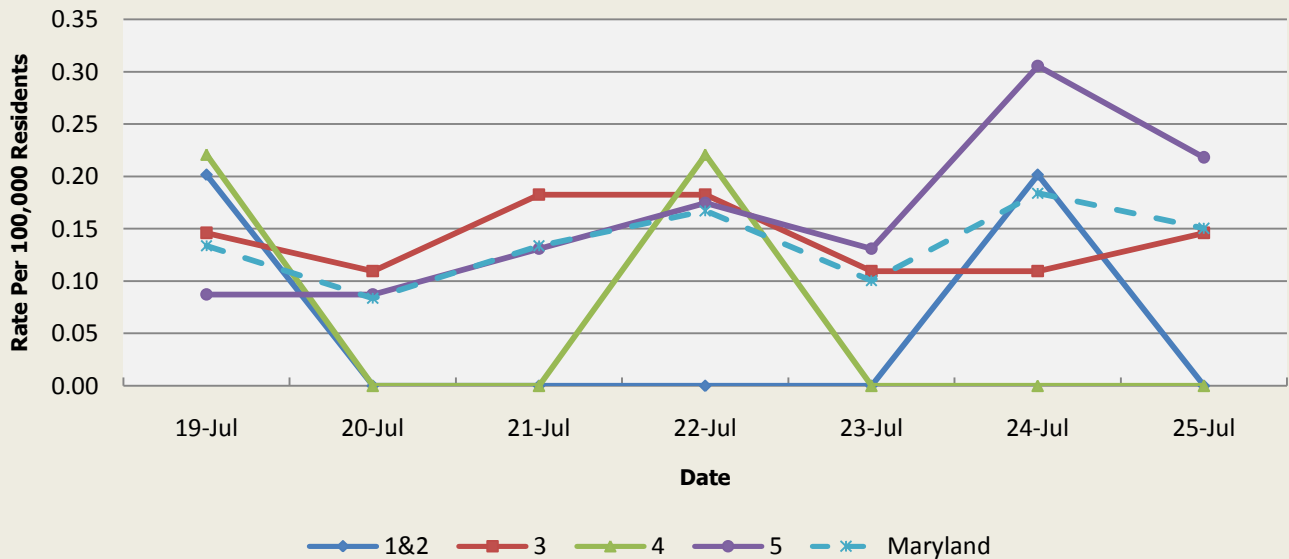


There was an appreciable increase above baseline in the rate of ED visits for Botulism-like Syndrome on 7/20 (Region 3), 7/21 (Regions 3,4,5), 7/22 (Regions 3,5), 7/23 (Region 3), 7/24 (Regions 1&2,3,4,5), and 7/25 (Regions 3,5). These increases are not known to be associated with any outbreaks.

Botulism-like Syndrome Baseline Data January 1, 2010 - Present					
Health Region	1&2	3	4	5	Maryland
Mean Rate*	0.06	0.06	0.04	0.04	0.05
Median Rate*	0.00	0.04	0.00	0.04	0.03

\* Per 100,000 Residents

**Emergency Department Chief Complaints for Hemorrhagic Illness Syndrome  
Rate Per 100,000 Residents**

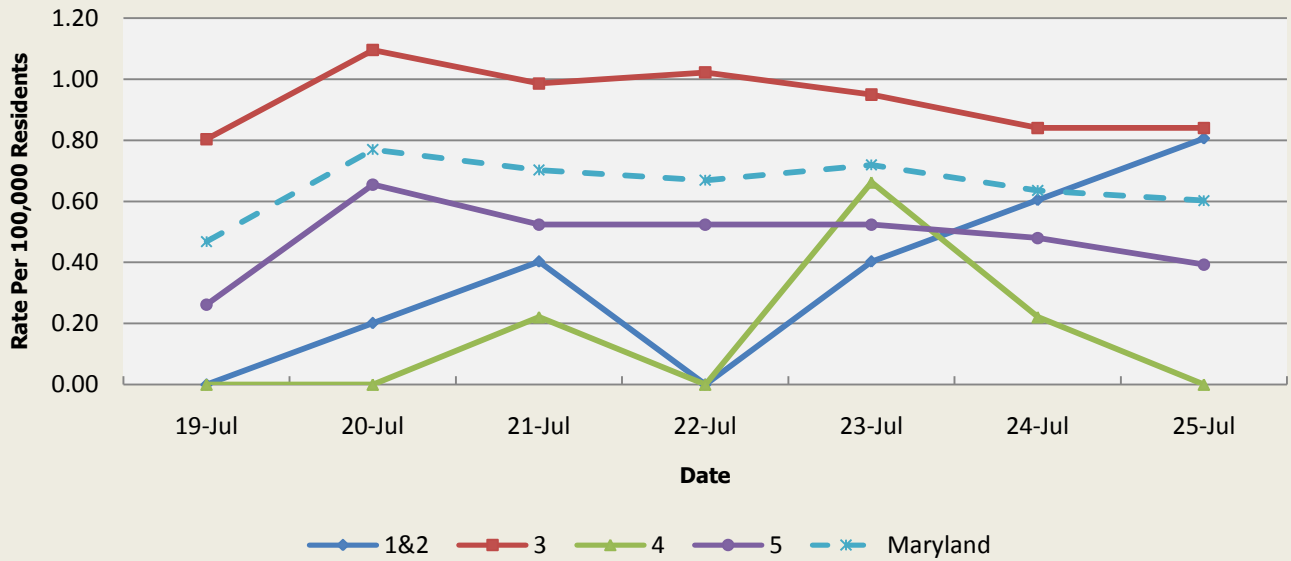


There was an appreciable increase above baseline in the rate of ED visits for Hemorrhagic Illness Syndrome on 7/19 (Regions 1&2,3,4), 7/21 (Regions 3,5), 7/22 (Regions 3,4,5), 7/23 (Region 5), 7/24 (Regions 1&2,5), and 7/25 (Regions 3,5). These increases are not known to be associated with any outbreaks.

Hemorrhagic Illness Syndrome Baseline Data January 1, 2010 - Present					
Health Region	1&2	3	4	5	Maryland
Mean Rate*	0.03	0.06	0.03	0.04	0.05
Median Rate*	0.00	0.04	0.00	0.00	0.03

\* Per 100,000 Residents

**Emergency Department Chief Complaints for Lymphadenitis Syndrome  
Rate Per 100,000 Residents**



There was an appreciable increase above baseline in the rate of ED visits for Lymphadenitis Syndrome on 7/19 (Region 3), 7/20 (Regions 3,5), 7/21 (Region 3), 7/22 (Region 3), 7/23 (Region 3), 7/24 (Region 3), and 7/25 (Regions 1&2,3). These increases are not known to be associated with any outbreaks.

Lymphadenitis Syndrome Baseline Data January 1, 2010 - Present					
Health Region	1&2	3	4	5	Maryland
Mean Rate*	0.31	0.37	0.34	0.25	0.32
Median Rate*	0.20	0.33	0.22	0.22	0.30

\* Per 100,000 Residents

**MARYLAND REPORTABLE DISEASE SURVEILLANCE**

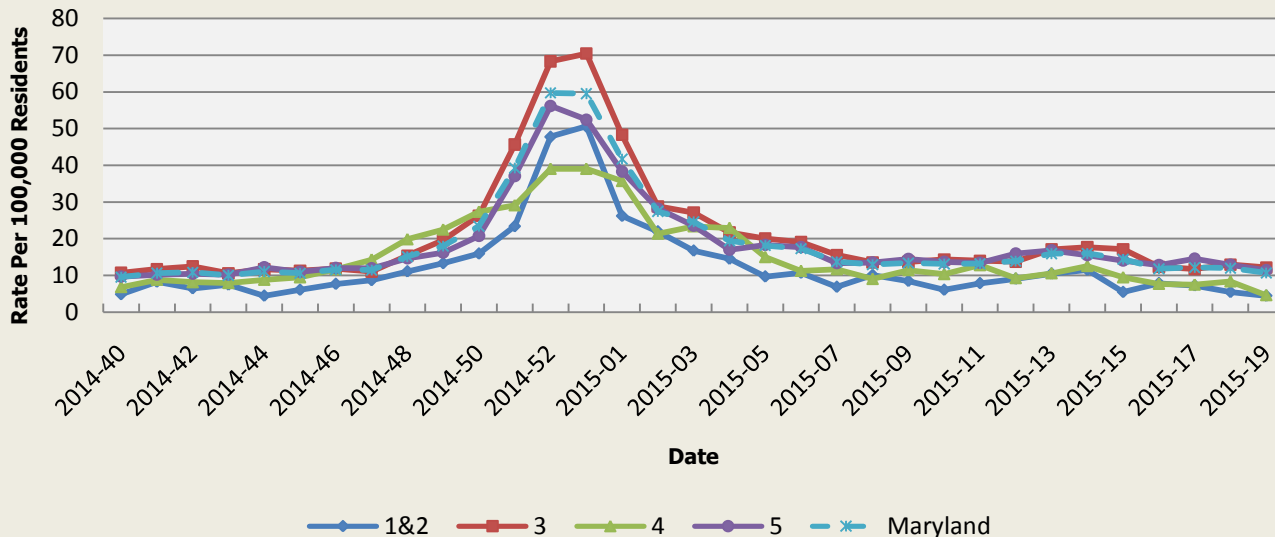
Condition	Counts of Reported Cases‡					
	July			Cumulative (Year to Date)**		
Vaccine-Preventable Diseases	2015	Mean*	Median*	2015	Mean*	Median*
Aseptic meningitis	43	33.2	32	208	217.8	229
Meningococcal disease	0	0.4	0	1	4.6	4
Measles	0	0	0	0	0.2	0
Mumps	1	0	0	6	20	2
Rubella	0	0	0	1	1	1
Pertussis	2	19	18	50	99.4	80
Foodborne Diseases	2015	Mean*	Median*	2015	Mean*	Median*
Salmonellosis	41	116.4	111	383	482.6	495
Shigellosis	6	11.6	11	114	88.4	73
Campylobacteriosis	37	71.8	69	342	335.6	337
Shiga toxin-producing Escherichia coli (STEC)	4	8	7	48	36	34
Listeriosis	0	1.4	1	7	6.2	6
Arboviral Diseases	2015	Mean*	Median*	2015	Mean*	Median*
West Nile Fever	0	0.4	0	0	0.4	0
Lyme Disease	75	183.6	190	532	794	792
Emerging Infectious Diseases	2015	Mean*	Median*	2015	Mean*	Median*
Chikungunya	1	2.2	0	12	4	0
Dengue Fever	0	0.8	1	4	4.2	5
Other	2015	Mean*	Median*	2015	Mean*	Median*
Legionellosis	14	12.2	8	62	67.4	64

‡ Counts are subject to change \*Timeframe of 2009-2014 \*\*Includes January through July

**SYNDROMIC INFLUENZA SURVEILLANCE**

Seasonal Influenza reporting occurs from MMWR Week 40 through MMWR Week 21 (October through May).

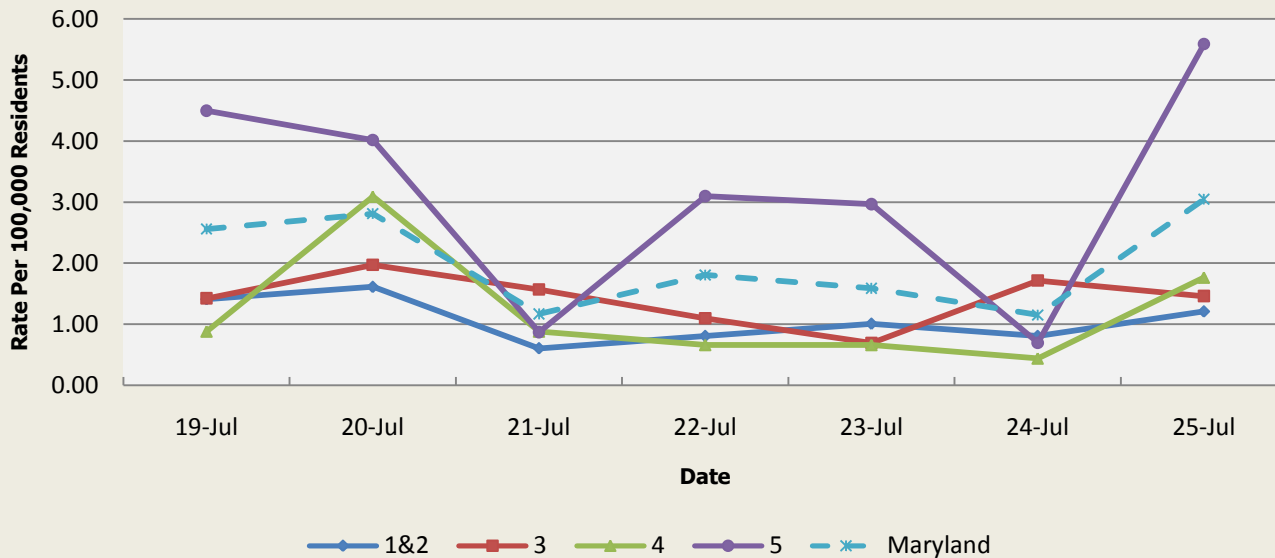
**Emergency Department Chief Complaints for Influenza-like Illness  
Rate Per 100,000 Residents**



Influenza-like Illness Baseline Data Week 1 2010 - Present					
Health Region	1&2	3	4	5	Maryland
Mean Rate*	9.51	10.67	10.87	9.84	10.27
Median Rate*	7.86	8.44	8.83	7.51	8.12

\* Per 100,000 Residents

**Over-the-Counter Medication Sales Related to Influenza  
Rate Per 100,000 Residents**

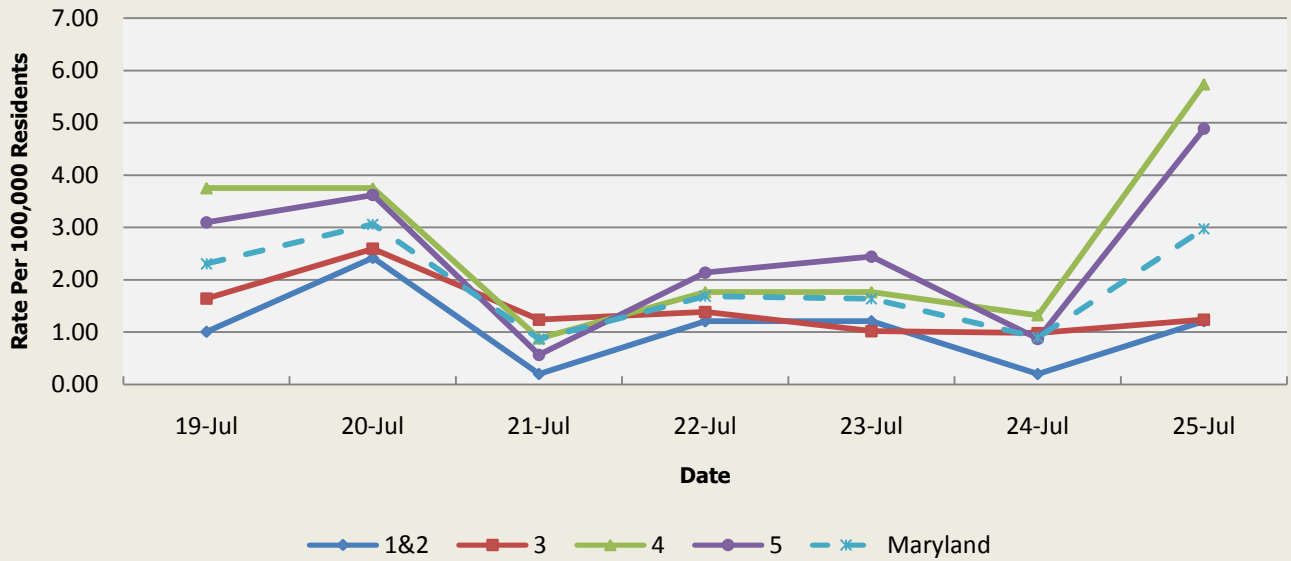


OTC Sales Baseline Data January 1, 2010 - Present					
Health Region	1&2	3	4	5	Maryland
Mean Rate*	5.44	6.12	3.05	13.96	8.84
Median Rate*	4.23	5.04	2.65	11.35	7.16

\* Per 100,000 Residents

There was not an appreciable increase above baseline in the rate of OTC flu medication sales this week.

**Over-the-Counter Thermometer Sales  
Rate Per 100,000 Residents**



There was not an appreciable increase above baseline in the rate of OTC thermometer sales this week.

Thermometer Sales Baseline Data January 1, 2010 - Present					
Health Region	1&2	3	4	5	Maryland
Mean Rate*	5.74	4.76	3.35	7.88	5.93
Median Rate*	5.04	4.38	3.09	7.25	5.50

\* Per 100,000 Residents



## **PANDEMIC INFLUENZA UPDATE / AVIAN INFLUENZA-RELATED REPORTS**

**WHO update:** The current WHO phase of pandemic alert for avian influenza is ALERT. Currently, the avian influenza H5N1 virus continues to circulate in poultry in some countries, especially in Asia and northeast Africa. This virus continues to cause sporadic human infections with some instances of limited human-to-human transmission among very close contacts. There has been no sustained human-to-human or community-level transmission identified thus far.

Influenza A (H7N9) is one of a subgroup of influenza viruses that normally circulate among birds. Until recently, this virus had not been seen in people. However, human infections have now been detected. As yet, there is limited information about the scope of the disease the virus causes and about the source of exposure. The disease is of concern because most patients have been severely ill. There is no indication thus far that it can be transmitted between people, but both animal-to-human and human-to-human routes of transmission are being actively investigated.

**Alert phase:** This is the phase when influenza caused by a new subtype has been identified in humans. Increased vigilance and careful risk assessment, at local, national and global levels, are characteristic of this phase. If the risk assessments indicate that the new virus is not developing into a pandemic strain, a de-escalation of activities towards those in the interpandemic phase may occur. As of July 17, 2015, the WHO-confirmed global total (2003-2015) of human cases of H5N1 avian influenza virus infection stands at 844, of which 449 have been fatal. Thus, the case fatality rate for human H5N1 is approximately 53%.

### **Avian Influenza in Humans:**

**H7N9 (CHINA):** 18 July 2015 On 16 Jul 2015, the National Health and Family Planning Commission (NHFPC) of China notified WHO of 5 additional laboratory-confirmed cases of human infection with avian influenza A(H7N9) virus, including 3 deaths. Read More: <http://www.promedmail.org/direct.php?id=3520026>

There were no reports of human cases of avian influenza in the United States at the time that this report was compiled.

### **Avian Influenza in Poultry:**

**H5N1 (GERMANY):** 28 July 2015 An egg-producing chicken farm in the centre of the Emsland region [Lower Saxony], with approximately 10,200 layers kept in 'floor system management', has been found infected by avian influenza. All the birds have been humanely killed. Read More: <http://www.promedmail.org/direct.php?id=3538703>

**H5N1 (VIETNAM):** 25 July 2015 Read More: <http://www.promedmail.org/direct.php?id=3536094>

## **NATIONAL DISEASE REPORTS**

**MUMPS (ILLINOIS, MISSOURI):** 30 July 2015 The Illinois Department of Public Health says the state has 73 known mumps cases right now and more than 2/3 are in Champaign County. State and local health officials say the number of cases in the Champaign area is at 50 and could climb. Read More: <http://www.promedmail.org/direct.php?id=3546295>

**GASTROENTERITIS (PENNSYLVANIA):** 29 July 2015 Norovirus has been confirmed in 3 people who became ill while swimming at Cowans Gap. The number of people who became ill after swimming in stream-fed mountain lake the weekend of 18-19 Jul 2015 has grown to more than 90. Read More: <http://www.promedmail.org/direct.php?id=3545782>

**TULAREMIA (NEBRASKA, WYOMING):** 26 July 2015 The Scotts Bluff County Health Department has been notified of a significant increase in positive tularemia cases in the county and eastern Wyoming over the past couple weeks. Read More: <http://www.promedmail.org/direct.php?id=3537025>

**INTERNATIONAL DISEASE REPORTS**

**MERS-COV (MULTI-COUNTRY):** 30 July 2015 Read More:

<http://www.promedmail.org/direct.php?id=3545902>

**EBOLA (MULTI-COUNTRY):** 29 July 2015 Read More: <http://www.promedmail.org/direct.php?id=3546144>

**HAND, FOOT, AND MOUTH DISEASE (PHILIPPINES):** 28 July 2015 The Department of Health has recorded a steep rise in the incidence of hand, foot and mouth disease (HFMD) among children nationwide, with more than 600 cases reported in the last 7 months. Read More:

<http://www.promedmail.org/direct.php?id=3543505>

**OTHER RESOURCES AND ARTICLES OF INTEREST**

More information concerning Public Health and Emergency Preparedness can be found at the Office of Preparedness and Response website: <http://preparedness.dhmf.maryland.gov/> or follow us on Facebook at [www.facebook.com/MarylandOPR](http://www.facebook.com/MarylandOPR).

More data and information on influenza can be found on the DHMH website:

<http://phpa.dhmf.maryland.gov/influenza/fluwatch/SitePages/Home.aspx>

Please participate in the Maryland Resident Influenza Tracking System (MRITS):

<http://flusurvey.dhmf.md.gov/>

\*\*\*\*\*

**NOTE:** This weekly review is a compilation of data from various surveillance systems, interpreted with a focus on a potential BT event. It is not meant to be inclusive of all epidemiology data available, nor is it meant to imply that every activity reported is a definitive BT event. International reports of outbreaks due to organisms on the CDC Critical Biological Agent list will also be reported. While not "secure", please handle this information in a professional manner. Please feel free to distribute within your organization, as you feel appropriate, to other professional staff involved in emergency preparedness and infection control.

For questions about the content of this review or if you have received this and do not wish to receive these weekly notices, please e-mail us. If you have information that is pertinent to this notification process, please send it to us to be included in the routine report.

Rachel Gallo, MPH  
Office of Preparedness and Response  
Maryland Department of Health & Mental Hygiene  
300 W. Preston Street, Suite 202  
Baltimore, MD 21201  
Office: 410-767-9647  
Fax: 410-333-5000  
Email: [Rachel.Gallo@maryland.gov](mailto:Rachel.Gallo@maryland.gov)

Anikah H. Salim, MPH, CPH  
Biosurveillance Epidemiologist  
Office of Preparedness and Response  
Maryland Department of Health & Mental Hygiene  
300 W. Preston Street, Suite 202  
Baltimore, MD 21201  
Office: 410-767-2074  
Fax: 410-333-5000  
Email: [Anikah.Salim@maryland.gov](mailto:Anikah.Salim@maryland.gov)

**Appendix 1: ESSENCE Syndrome Definitions and Associated Category A Conditions**

<b>Syndrome</b>	<b>ESSENCE Definition</b>	<b>Category A Conditions</b>
Botulism-like	(Botulism or (DifficultyFocusing and DifficultySpeaking) or (DifficultySpeaking and DifficultySwallowing) or (DifficultySwallowing and DifficultyFocusing) or DoubleVision or FacialParalysis or GuillainBarre or Ptosis) and not GeneralExclusions	Botulism
Fever	(Chills or (FeverPlus and (Drowsiness or Seizure)) or FeverOnly or SepsisGroup or ViralSyndrome) and not GeneralExclusions	N/A
Gastrointestinal	(AbdominalCramps or AbdominalPainGroup or Diarrhea or FoodPoisoning or Gastroenteritis or GIBleeding or Peritonitis or Vomiting) and not (GeneralExclusions or Gynecological or Obstetric or Reproductive or UrinaryTract)	Anthrax (gastrointestinal)
Hemorrhagic Illness	(FeverOrChills and (AcuteBloodAbnormalitiesGroup or BleedingFromMouth or BleedingGums or GIBleeding or Hematemesis or Hemoptysis or Nosebleed or Petechiae or Purpura)) and not GeneralExclusions	Viral Hemorrhagic Fever
Localized Lesion	(Boils or Bump or Carbuncle or DepressedUlcer or Eschar or Furuncle or InsectBite or SkinAbscess or (SkinSores and not AllOverBody) or SkinUlcer or SpiderBite) and not (GeneralExclusions or Decubitus or Diabetes or StasisUlcer)	Anthrax (cutaneous) Tularemia
Lymphadenitis	(BloodPoisoning or Bubo or CatScratchDisease or SwollenGlands) and not GeneralExclusions	Plague (bubonic)
Neurological	(([Age<75] and AlteredMentalStatus) or (FeverPlus and (Confusion or Drowsiness or Petechiae or StiffNeck)) or Delirium or Encephalitis or Meningitis or UnconsciousGroup) and not GeneralExclusions	N/A
Rash	(ChickenPox or Measles or RashGeneral or Roseola or (Rubella and not Pregnancy) or Shingles or (SkinSores and AllOverBody) or Smallpox) and not GeneralExclusions	Smallpox
Respiratory	(Anthrax or Bronchitis or (ChestPain and [Age<50]) or Cough or Croup or DifficultyBreathing or Hemothorax or Hypoxia or Influenza or Legionnaires or LowerRespiratoryInfection or Pleurisy or Pneumonia or RespiratoryDistress or RespiratoryFailure or RespiratorySyncytialVirus or RibPain or ShortnessOfBreath or Wheezing) and not (GeneralExclusions or Cardiac or (ChestPain and Musculoskeletal) or Hyperventilation or Pneumothorax)	Anthrax (inhalational) Tularemia Plague (pneumonic)
Severe Illness or Death	CardiacArrest or CodeGroup or DeathGroup or (Hypotension and FeverPlus) or RespiratoryArrest or SepsisGroup or Shock	N/A

## Appendix 2: Maryland Health and Medical Region Definitions

Health and Medical Region	Counties Reporting to ESSENCE
Regions 1 & 2	Allegany County Frederick County Garrett County Washington County
Region 3	Anne Arundel County Baltimore City Baltimore County Carroll County Harford County Howard County
Region 4	Caroline County Cecil County Dorchester County Kent County Queen Anne's County Somerset County Talbot County Wicomico County Worcester County
Region 5	Calvert County Charles County Montgomery County Prince George's County St. Mary's County

