



March 20, 2015

**Public Health Preparedness and Situational Awareness Report: # 2015:10  
Reporting for the week ending 03/14/15 (MMWR Week #10)**

**CURRENT HOMELAND SECURITY THREAT LEVELS**

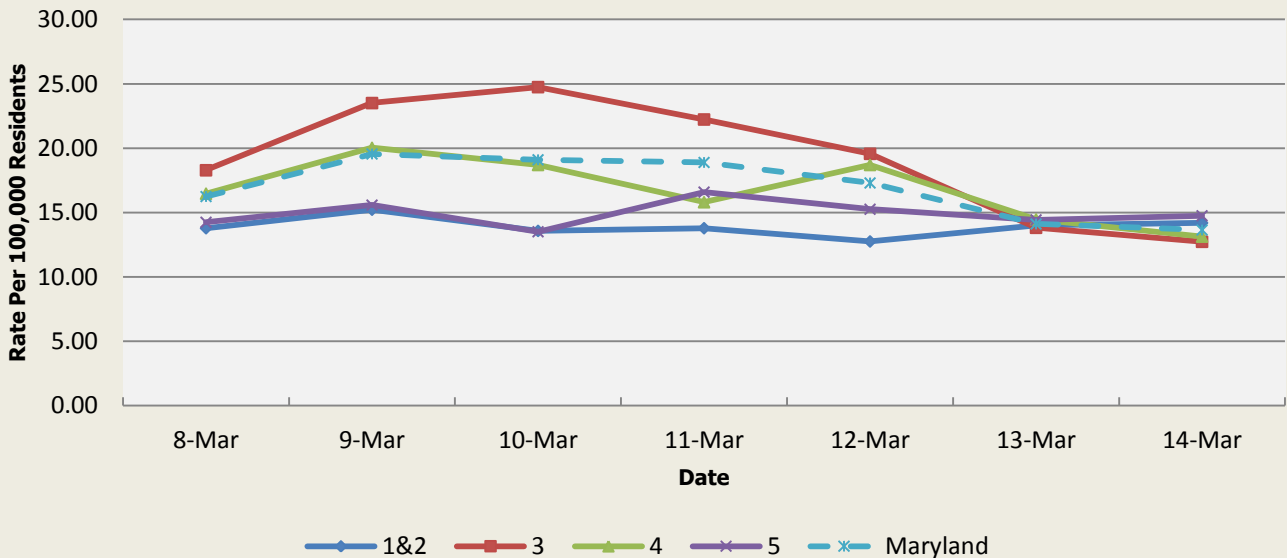
**National: No Active Alerts**  
**Maryland: Level Four (MEMA status)**

**SYNDROMIC SURVEILLANCE REPORTS**

**ESSENCE (Electronic Surveillance System for the Early Notification of Community-based Epidemics):**

Graphical representation is provided for all syndromes (excluding the "Other" category; see Appendix 1) by Health and Medical Regions (See Appendix 2). Emergency department chief complaint data is presented as rates per 100,000 residents using data from the 2010 census.

**Emergency Department Chief Complaints for Gastrointestinal Syndrome  
Rate Per 100,000 Residents**



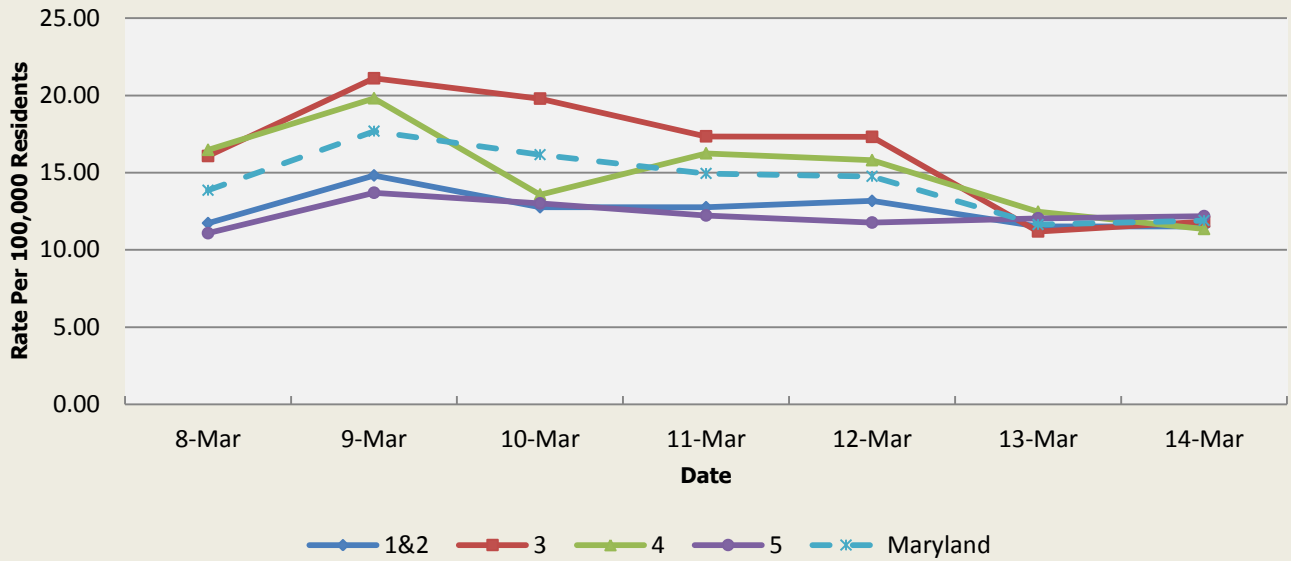
There were 9 gastrointestinal illness outbreaks reported this week: 6 outbreaks of gastroenteritis in nursing homes (Regions 3, 4) and 3 outbreaks of gastroenteritis in assisted living facilities (Regions 1&2, 3, 5).

**Gastrointestinal Syndrome Baseline  
Data  
January 1, 2010 - Present**

Health Region	1&2	3	4	5	Maryland
Mean Rate*	13.17	14.27	15.32	10.39	12.80
Median Rate*	13.17	14.20	14.69	10.30	12.73

\* Per 100,000 Residents

**Emergency Department Chief Complaints for Respiratory Syndrome  
Rate Per 100,000 Residents**

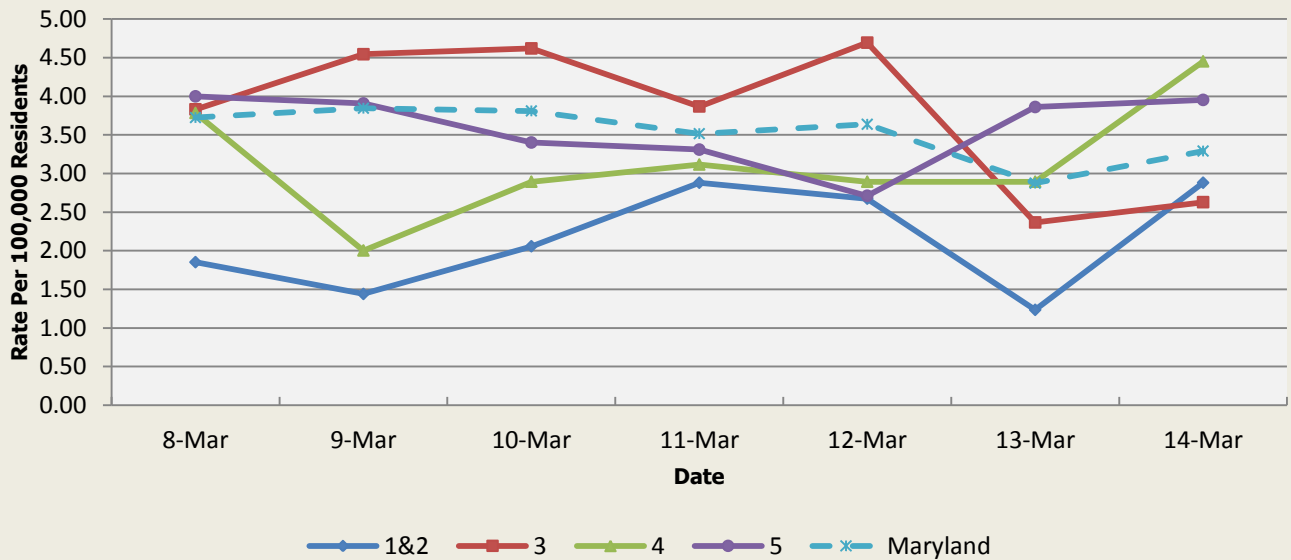


There was 1 respiratory illness outbreak reported this week: 1 outbreak of ILI in a nursing home (Region 5).

Respiratory Syndrome Baseline Data January 1, 2010 - Present					
Health Region	1&2	3	4	5	Maryland
Mean Rate*	12.14	13.38	13.76	9.85	11.97
Median Rate*	11.73	12.99	13.36	9.56	11.67

\* Per 100,000 Residents

**Emergency Department Chief Complaints for Fever Syndrome  
Rate Per 100,000 Residents**

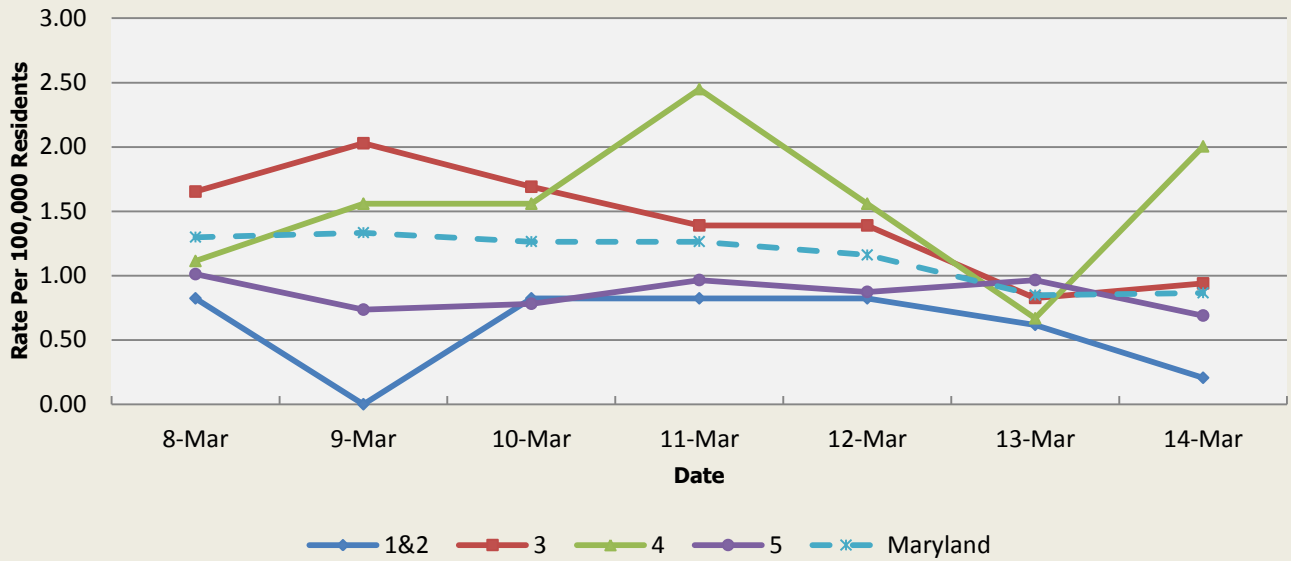


There were no fever outbreaks reported this week.

Fever Syndrome Baseline Data January 1, 2010 - Present					
Health Region	1&2	3	4	5	Maryland
Mean Rate*	3.24	3.64	3.89	3.15	3.44
Median Rate*	3.09	3.49	3.78	3.03	3.31

Per 100,000 Residents

**Emergency Department Chief Complaints for Localized Lesion Syndrome  
Rate Per 100,000 Residents**

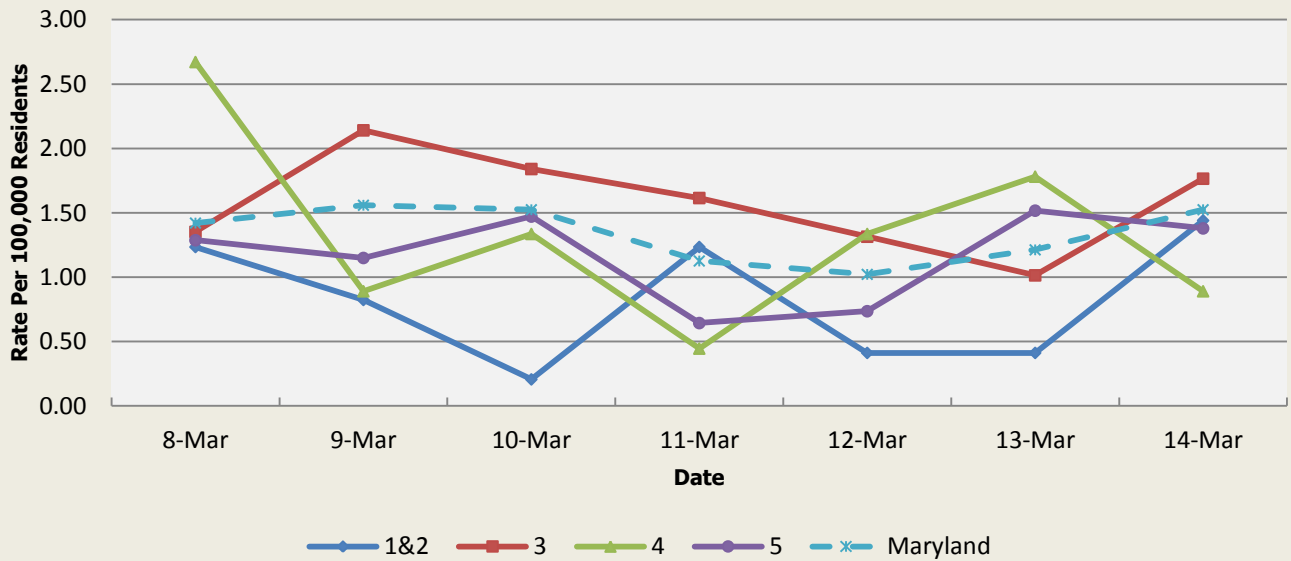


There were no localized lesion outbreaks reported this week.

Localized Lesion Syndrome Baseline Data January 1, 2010 - Present					
Health Region	1&2	3	4	5	Maryland
Mean Rate*	1.17	1.97	2.06	1.04	1.56
Median Rate*	1.03	1.92	2.00	1.01	1.51

\* Per 100,000 Residents

**Emergency Department Chief Complaints for Rash Syndrome  
Rate Per 100,000 Residents**

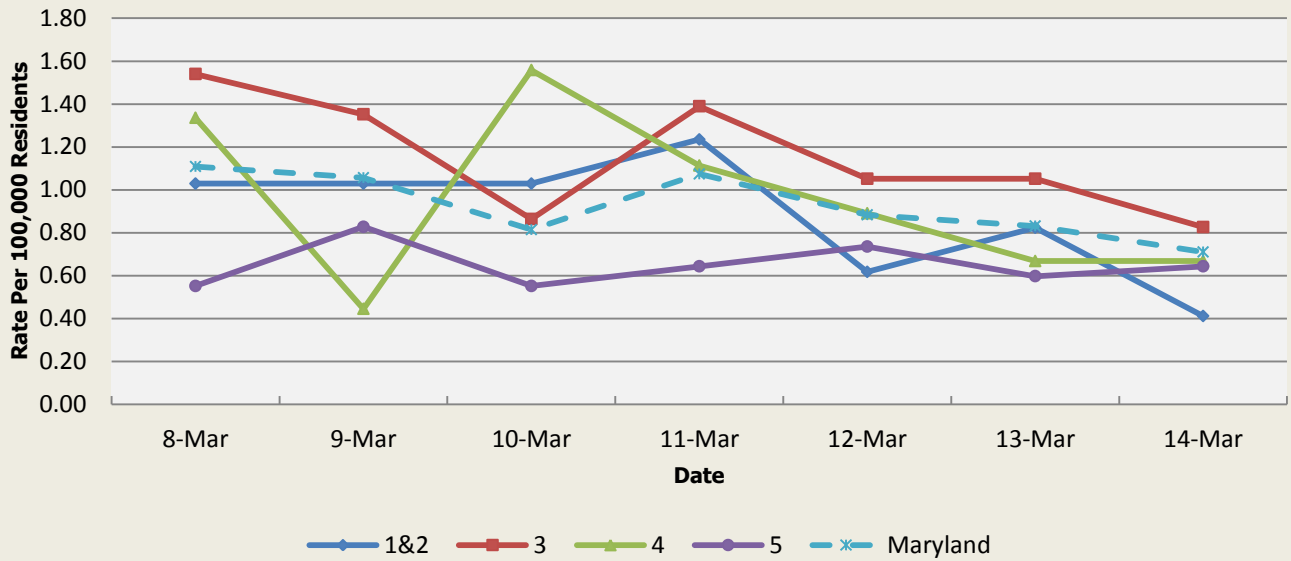


There was 1 rash illness outbreak reported this week: 1 outbreak of scabies in a nursing home (Region 3).

Rash Syndrome Baseline Data January 1, 2010 - Present					
Health Region	1&2	3	4	5	Maryland
Mean Rate*	1.40	1.75	1.78	1.09	1.47
Median Rate*	1.23	1.69	1.78	1.06	1.42

\* Per 100,000 Residents

**Emergency Department Chief Complaints for Neurological Syndrome  
Rate Per 100,000 Residents**

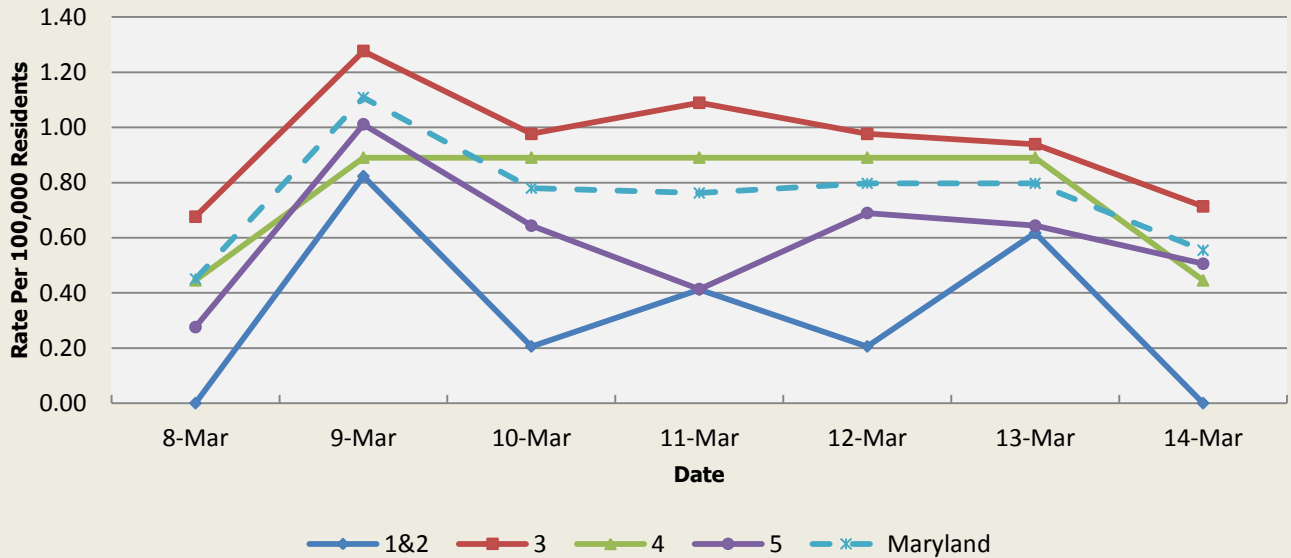


There were no neurological outbreaks reported this week.

Neurological Syndrome Baseline Data January 1, 2010 - Present					
Health Region	1&2	3	4	5	Maryland
Mean Rate*	0.61	0.62	0.59	0.43	0.55
Median Rate*	0.62	0.60	0.45	0.41	0.54

\* Per 100,000 Residents

**Emergency Department Chief Complaints for Severe Illness or Death Syndrome  
Rate Per 100,000 Residents**



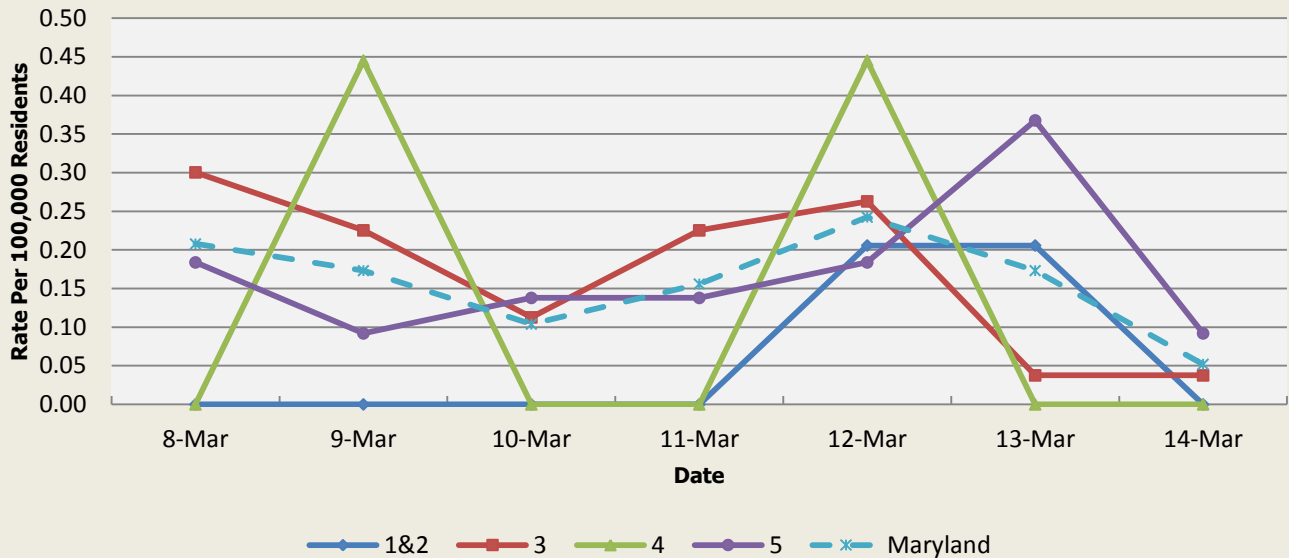
There were no severe illness or death outbreaks reported this week.

Severe Illness or Death Syndrome Baseline Data January 1, 2010 - Present					
Health Region	1&2	3	4	5	Maryland
Mean Rate*	0.80	0.95	0.89	0.42	0.73
Median Rate*	0.82	0.94	0.89	0.41	0.73

\* Per 100,000 Residents

## SYNDROMES RELATED TO CATEGORY A AGENTS

**Emergency Department Chief Complaints for Botulism-like Syndrome  
Rate Per 100,000 Residents**

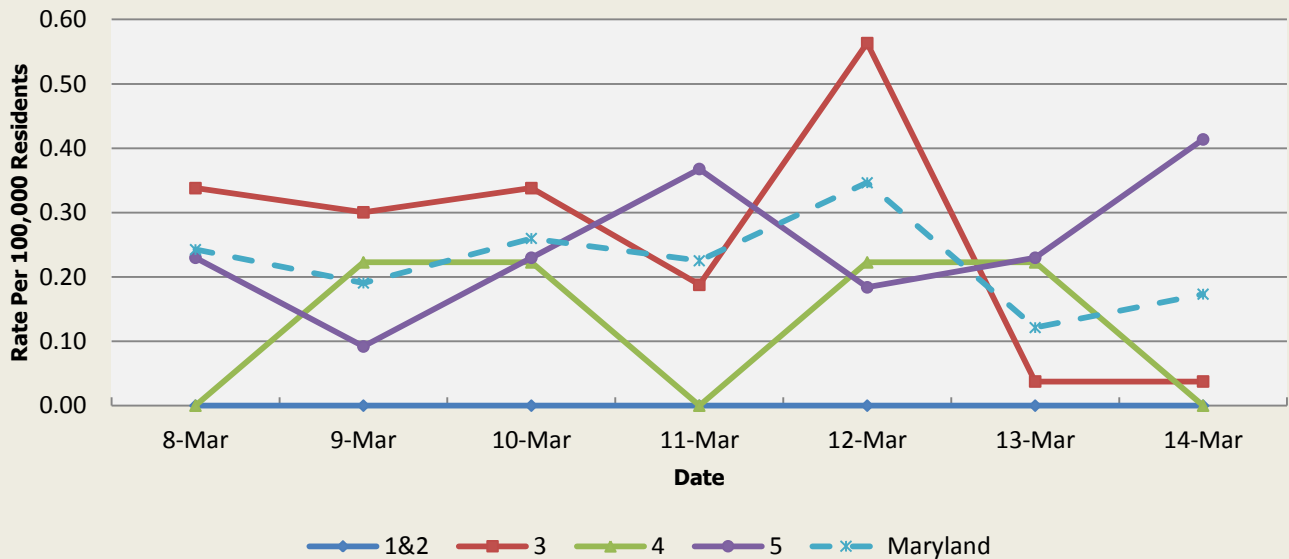


There was an appreciable increase above baseline in the rate of ED visits for Botulism-like Syndrome on 3/8 (Region 3), 3/9 (Regions 3,4), 3/11 (Region 3), 3/12 (Regions 3,4), and 3/13 (Region 5). These increases are not known to be associated with any outbreaks.

Botulism-like Syndrome Baseline Data January 1, 2010 - Present					
Health Region	1&2	3	4	5	Maryland
Mean Rate*	0.06	0.04	0.04	0.03	0.04
Median Rate*	0.00	0.04	0.00	0.00	0.03

\* Per 100,000 Residents

**Emergency Department Chief Complaints for Hemorrhagic Illness Syndrome  
Rate Per 100,000 Residents**

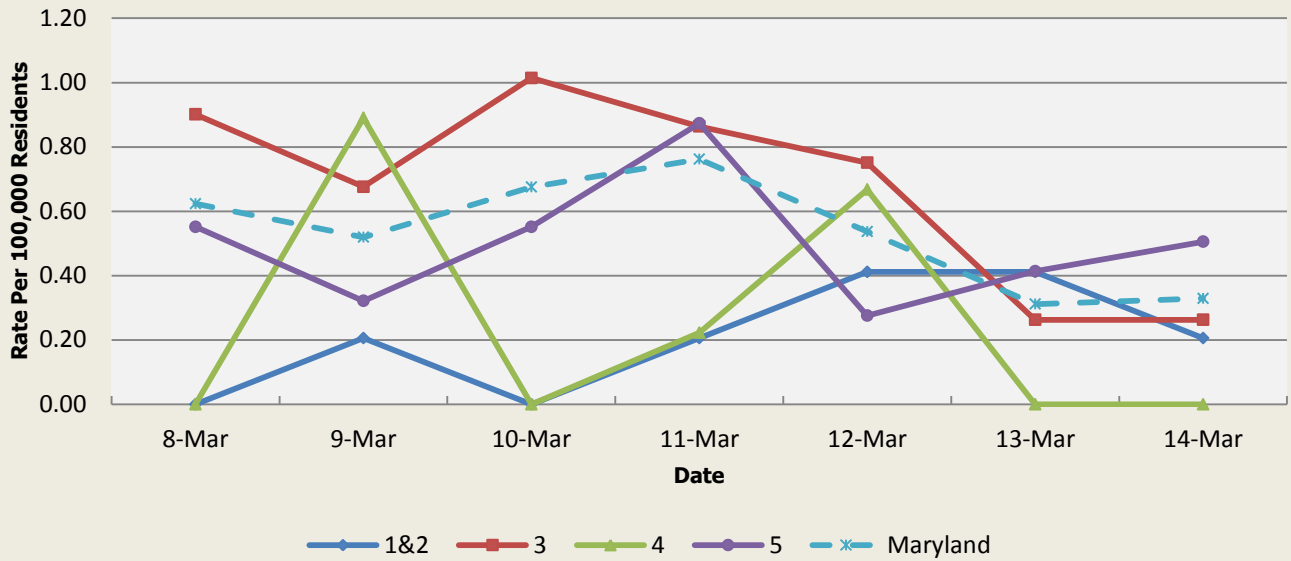


There was an appreciable increase above baseline in the rate of ED visits for Hemorrhagic Illness Syndrome on 3/8-3/10 (Region 3), 3/11 (Region 5), 3/12 (Region 3), and 3/14 (Region 5). These increases are not known to be associated with any outbreaks.

Hemorrhagic Illness Syndrome Baseline Data January 1, 2010 - Present					
Health Region	1&2	3	4	5	Maryland
Mean Rate*	0.03	0.04	0.03	0.03	0.03
Median Rate*	0.00	0.04	0.00	0.00	0.03

\* Per 100,000 Residents

**Emergency Department Chief Complaints for Lymphadenitis Syndrome  
Rate Per 100,000 Residents**



There was an appreciable increase above baseline in the rate of ED visits for Lymphadenitis Syndrome on 3/8 (Region 3,5), 3/9 (Region 4), 3/10 (Region 3,5), 3/11 (Region 3,5), 3/12 (Region 3,4). These increases are not known to be associated with any outbreaks.

Lymphadenitis Syndrome Baseline Data January 1, 2010 - Present					
Health Region	1&2	3	4	5	Maryland
Mean Rate*	0.32	0.35	0.35	0.24	0.31
Median Rate*	0.21	0.34	0.22	0.23	0.29

\* Per 100,000 Residents

**MARYLAND REPORTABLE DISEASE SURVEILLANCE**

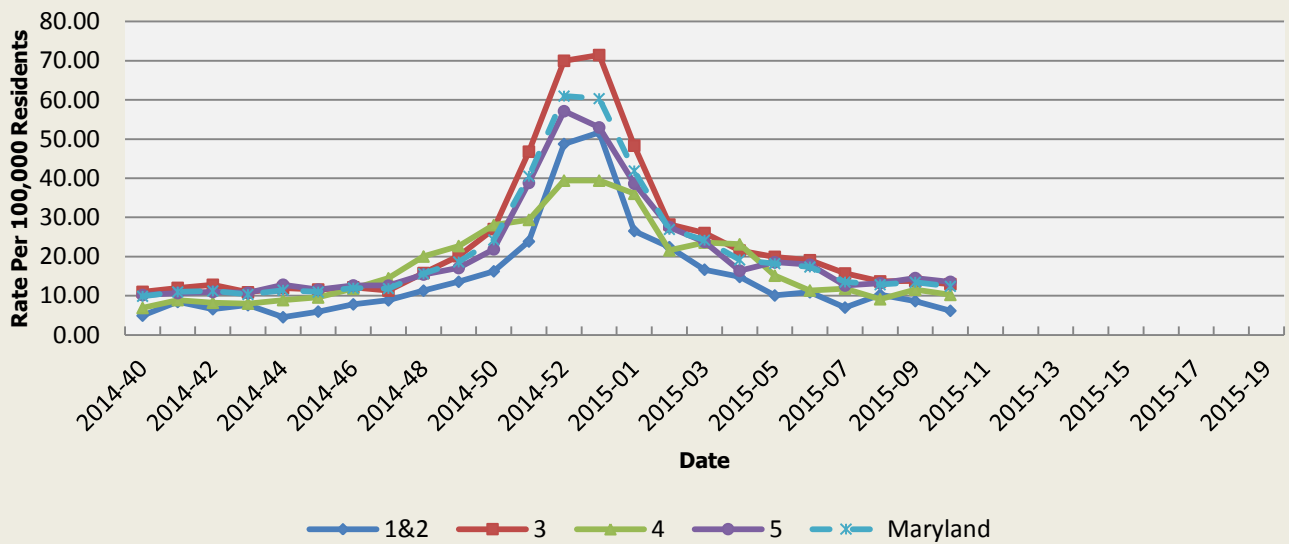
Condition	Counts of Reported Cases†					
	March			Cumulative (Year to Date)**		
Vaccine-Preventable Diseases	2015	Mean*	Median*	2015	Mean*	Median*
Aseptic meningitis	9	28.2	28	49	88.2	91
Meningococcal disease	0	0.8	1	1	2.4	2
Measles	0	0	0	0	0	0
Mumps	0	6.8	0	1	9.2	0
Rubella	0	0.2	0	0	0.2	0
Pertussis	0	11.4	11	18	38.6	33
Foodborne Diseases	2015	Mean*	Median*	2015	Mean*	Median*
Salmonellosis	8	49.6	52	77	139.8	132
Shigellosis	8	13.6	10	48	34.2	28
Campylobacteriosis	3	29.8	26	70	95.2	91
Shiga toxin-producing Escherichia coli (STEC)	0	3.6	4	5	10.6	11
Listeriosis	0	0.2	0	3	1.2	1
Arboviral Diseases	2015	Mean*	Median*	2015	Mean*	Median*
West Nile Fever	0	0	0	0	0	0
Lyme Disease	10	53.8	61	46	132.8	150
Emerging Infectious Diseases	2015	Mean*	Median*	2015	Mean*	Median*
Chikungunya	1	0	0	9	0	0
Dengue Fever	0	0.4	0	0	1.8	2
Other	2015	Mean*	Median*	2015	Mean*	Median*
Legionellosis	1	5.8	4	10	16.4	16

† Counts are subject to change    \*Timeframe of 2009-2014    \*\*Includes January through the present month

**SYNDROMIC INFLUENZA SURVEILLANCE**

Seasonal Influenza reporting occurs from MMWR Week 40 through MMWR Week 22 (October through May). Seasonal influenza activity for Week 10 was: Local Activity with Minimal Intensity.

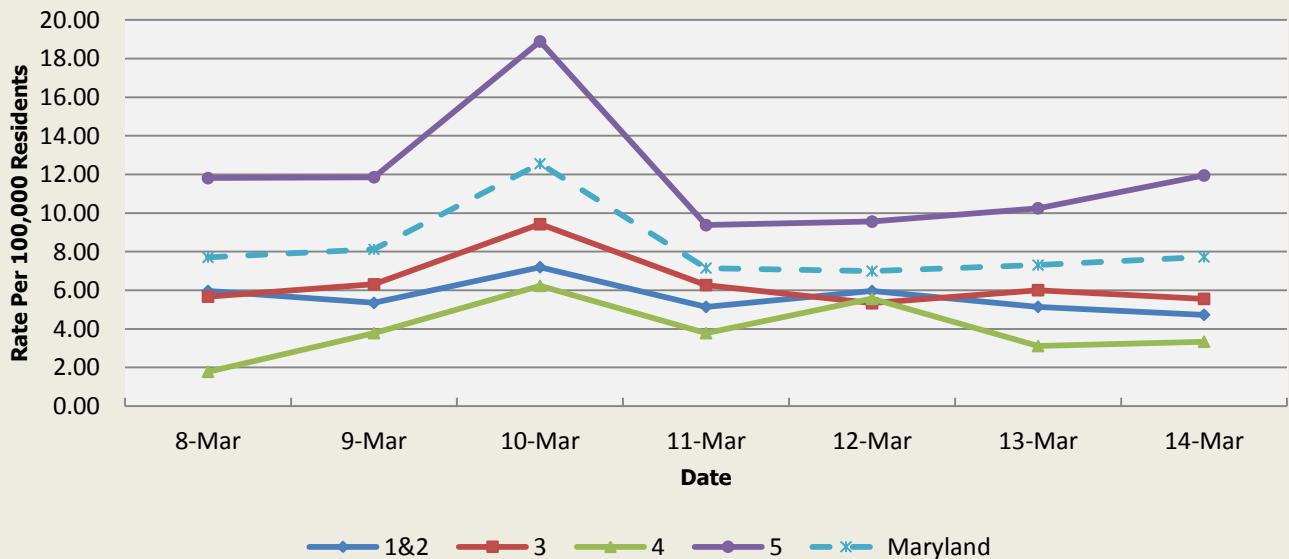
**Emergency Department Chief Complaints for Influenza-like Illness  
Rate Per 100,000 Residents**



Influenza-like Illness Baseline Data Week 1 2010 - Present					
Health Region	1&2	3	4	5	Maryland
Mean Rate*	9.86	10.58	11.04	9.90	10.30
Median Rate*	8.02	8.26	8.90	7.40	8.00

\* Per 100,000 Residents

**Over-the-Counter Medication Sales Related to Influenza  
Rate Per 100,000 Residents**

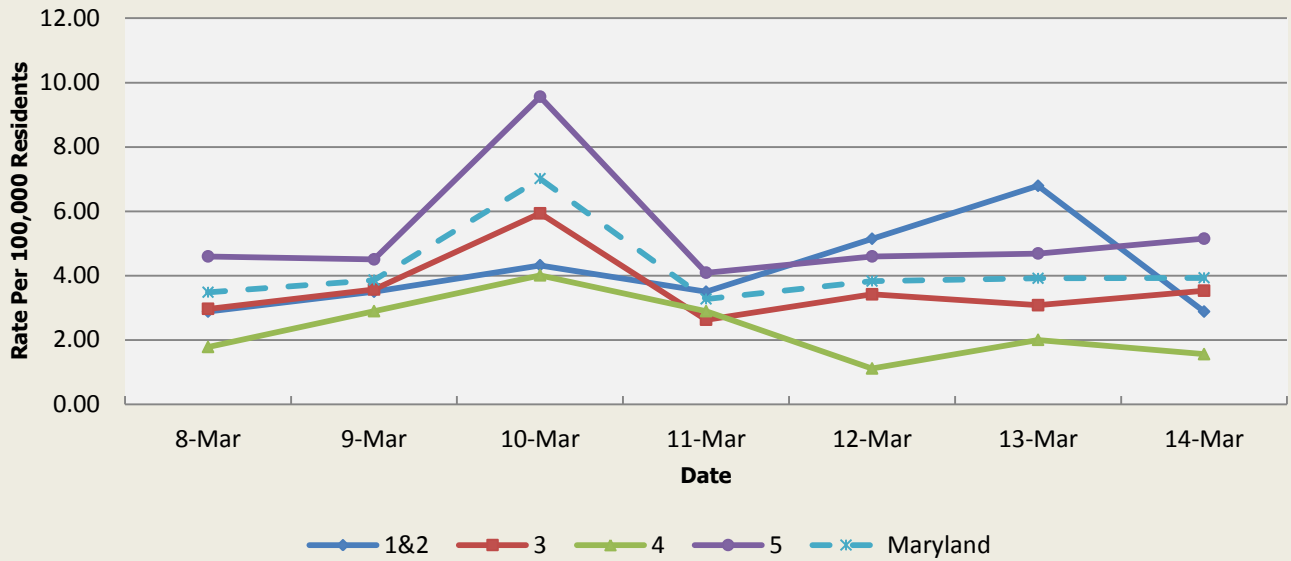


OTC Sales Baseline Data January 1, 2010 - Present					
Health Region	1&2	3	4	5	Maryland
Mean Rate*	5.64	6.40	3.10	14.92	9.29
Median Rate*	4.32	5.26	2.67	12.13	7.53

\* Per 100,000 Residents

There was not an appreciable increase above baseline in the rate of OTC flu medication sales this week.

**Over-the-Counter Thermometer Sales  
Rate Per 100,000 Residents**



There was not an appreciable increase above baseline in the rate of OTC thermometer sales this week.

Thermometer Sales Baseline Data January 1, 2010 - Present					
Health Region	1&2	3	4	5	Maryland
Mean Rate*	5.84	4.93	3.43	8.42	6.20
Median Rate*	5.14	4.54	3.12	7.77	5.74

\* Per 100,000 Residents



## **PANDEMIC INFLUENZA UPDATE / AVIAN INFLUENZA-RELATED REPORTS**

**WHO update:** The current WHO phase of pandemic alert for avian influenza is ALERT. Currently, the avian influenza H5N1 virus continues to circulate in poultry in some countries, especially in Asia and northeast Africa. This virus continues to cause sporadic human infections with some instances of limited human-to-human transmission among very close contacts. There has been no sustained human-to-human or community-level transmission identified thus far.

Influenza A (H7N9) is one of a subgroup of influenza viruses that normally circulate among birds. Until recently, this virus had not been seen in people. However, human infections have now been detected. As yet, there is limited information about the scope of the disease the virus causes and about the source of exposure. The disease is of concern because most patients have been severely ill. There is no indication thus far that it can be transmitted between people, but both animal-to-human and human-to-human routes of transmission are being actively investigated.

**Alert phase:** This is the phase when influenza caused by a new subtype has been identified in humans. Increased vigilance and careful risk assessment, at local, national and global levels, are characteristic of this phase. If the risk assessments indicate that the new virus is not developing into a pandemic strain, a de-escalation of activities towards those in the interpandemic phase may occur. As of March 3, 2015, the WHO-confirmed global total (2003-2015) of human cases of H5N1 avian influenza virus infection stands at 784, of which 429 have been fatal. Thus, the case fatality rate for human H5N1 is approximately 55%.

**H5N1 (CHINA):** 13 Mar 2015 The Centre for Health Protection (CHP) of the Department of Health (DH) today (13 Mar 2015) received notification from the National Health and Family Planning Commission (NHFPC) of a human case of avian influenza A(H5N1) affecting a man aged 46 in Sichuan. Read more: <http://www.promedmail.org/direct.php?id=3228528>

**H5N1 (EGYPT):** 13 Mar 2015 A PDF of the document European Centre for Disease Prevention and Control. Human infection with avian influenza A(H5N1) virus, Egypt -- first update. 13 Mar 2015. Stockholm: ECDC; 2015 is available online at the URL above for no cost. Read more: <http://www.promedmail.org/direct.php?id=3230812>

There were no reports of human cases of avian influenza in the United States this week.

## **NATIONAL DISEASE REPORTS**

**SALMONELLOSIS (USA):** 12 Mar At least 78 people have now been sickened in a salmonellosis outbreak affecting residents of northwestern Texas, according to various news reports. Read more: <http://www.promedmail.org/direct.php?id=3230173>

**MELIOIDOSIS (USA):** 13 Mar 2015 Officials with the U.S. Department of Health and Human Services' Centers for Disease Control and Prevention (CDC), along with the U. S. Department of Agriculture's (USDA) Animal and Plant Health Inspection Service (APHIS) have completed their joint investigation into how the Burkholderia pseudomallei bacteria may have been inadvertently transferred from a secure, select agent laboratory into animals from the breeding colony of the Tulane National Primate Research Center (TNPRC). Read more: <http://www.promedmail.org/direct.php?id=3229363>

**LISTERIA (USA):** 13 Mar 2015 The Kansas Department of Health and Environment (KDHE) has been working with the Centers for Disease Control and Prevention (CDC), the U.S. Food and Drug Administration (FDA) and the Texas Department of State Health Services (DSHS) to investigate an outbreak of listeriosis cases in 5 adult Kansas residents linked to ice cream consumed from Blue Bell Creameries. Read more: <http://www.promedmail.org/direct.php?id=3231917>

## **INTERNATIONAL DISEASE REPORTS**

**ANTHRAX (INDIA):** 16 Mar 2015 3 persons were affected by anthrax in Satasemala village under Nandapur block of the district on Saturday [14 Mar 2015]. Read more:

<http://www.promedmail.org/direct.php?id=3234549>

**UNDIAGNOSED OUTBREAK (SUDAN):** 16 Mar 2015 Dozens of people died recently, owing to the spread of various diseases in the gold mining area of Jebel 'Amer, El Sareif Beni Hussein locality in North Darfur. Read more: <http://www.promedmail.org/direct.php?id=3234521>

**Q FEVER (BRAZIL):** 16 Mar 2015 Refrigerator workers in Barbosa (71 km from Aracatuba) who have felt ill for almost 2 months are suffering from Q fever. Read more:

<http://www.promedmail.org/direct.php?id=3238647>

**EBOLA (MULTI-COUNTRY):** 17 Mar 2015 WHO Ebola Response Roadmap Situation Report. Read more:

<http://www.promedmail.org/direct.php?id=3242564> (click through to who.int link)

## **OTHER RESOURCES AND ARTICLES OF INTEREST**

More information concerning Public Health and Emergency Preparedness can be found at the Office of Preparedness and Response website: <http://preparedness.dhmm.maryland.gov/> or follow us on Facebook at [www.facebook.com/MarylandOPR](http://www.facebook.com/MarylandOPR).

More data and information on influenza can be found on the DHMH website:

<http://phpa.dhmm.maryland.gov/influenza/fluwatch/SitePages/Home.aspx>

Please participate in the Maryland Resident Influenza Tracking System (MRITS):

<http://flusurvey.dhmm.md.gov/>

\*\*\*\*\*

**NOTE:** This weekly review is a compilation of data from various surveillance systems, interpreted with a focus on a potential BT event. It is not meant to be inclusive of all epidemiology data available, nor is it meant to imply that every activity reported is a definitive BT event. International reports of outbreaks due to organisms on the CDC Critical Biological Agent list will also be reported. While not "secure", please handle this information in a professional manner. Please feel free to distribute within your organization, as you feel appropriate, to other professional staff involved in emergency preparedness and infection control.

For questions about the content of this review or if you have received this and do not wish to receive these weekly notices, please e-mail us. If you have information that is pertinent to this notification process, please send it to us to be included in the routine report.

Elizabeth Humes, MPH  
Biosurveillance Epidemiologist  
Office of Preparedness and Response  
Maryland Department of Health & Mental Hygiene  
300 W. Preston Street, Suite 202  
Baltimore, MD 21201  
Office: 410-767-5668  
Fax: 410-333-5000  
Email: [elizabeth.humes@maryland.gov](mailto:elizabeth.humes@maryland.gov)

Anikah H. Salim, MPH, CPH  
Biosurveillance Epidemiologist  
Office of Preparedness and Response  
Maryland Department of Health & Mental Hygiene  
300 W. Preston Street, Suite 202  
Baltimore, MD 21201  
Office: 410-767-2074  
Fax: 410-333-5000  
Email: [Anikah.Salim@maryland.gov](mailto:Anikah.Salim@maryland.gov)

**Appendix 1: ESSENCE Syndrome Definitions and Associated Category A Conditions**

Syndrome	ESSENCE Definition	Category A Conditions
Botulism-like	(Botulism or (DifficultyFocusing and DifficultySpeaking) or (DifficultySpeaking and DifficultySwallowing) or (DifficultySwallowing and DifficultyFocusing) or DoubleVision or FacialParalysis or GuillainBarre or Ptosis) and not GeneralExclusions	Botulism
Fever	(Chills or (FeverPlus and (Drowsiness or Seizure)) or FeverOnly or SepsisGroup or ViralSyndrome) and not GeneralExclusions	N/A
Gastrointestinal	(AbdominalCramps or AbdominalPainGroup or Diarrhea or FoodPoisoning or Gastroenteritis or GIBleeding or Peritonitis or Vomiting) and not (GeneralExclusions or Gynecological or Obstetric or Reproductive or UrinaryTract)	Anthrax (gastrointestinal)
Hemorrhagic Illness	(FeverOrChills and (AcuteBloodAbnormalitiesGroup or BleedingFromMouth or BleedingGums or GIBleeding or Hematemesis or Hemoptysis or Nosebleed or Petechiae or Purpura)) and not GeneralExclusions	Viral Hemorrhagic Fever
Localized Lesion	(Boils or Bump or Carbuncle or DepressedUlcer or Eschar or Furuncle or InsectBite or SkinAbscess or (SkinSores and not AllOverBody) or SkinUlcer or SpiderBite) and not (GeneralExclusions or Decubitus or Diabetes or StasisUlcer)	Anthrax (cutaneous) Tularemia
Lymphadenitis	(BloodPoisoning or Bubo or CatScratchDisease or SwollenGlands) and not GeneralExclusions	Plague (bubonic)
Neurological	(((Age<75] and AlteredMentalStatus) or (FeverPlus and (Confusion or Drowsiness or Petechiae or StiffNeck))) or Delirium or Encephalitis or Meningitis or UnconsciousGroup) and not GeneralExclusions	N/A
Rash	(ChickenPox or Measles or RashGeneral or Roseola or (Rubella and not Pregnancy) or Shingles or (SkinSores and AllOverBody) or Smallpox) and not GeneralExclusions	Smallpox
Respiratory	(Anthrax or Bronchitis or (ChestPain and [Age<50]) or Cough or Croup or DifficultyBreathing or Hemothorax or Hypoxia or Influenza or Legionnaires or LowerRespiratoryInfection or Pleurisy or Pneumonia or RespiratoryDistress or RespiratoryFailure or RespiratorySyncytialVirus or RibPain or ShortnessOfBreath or Wheezing) and not (GeneralExclusions or Cardiac or (ChestPain and Musculoskeletal) or Hyperventilation or Pneumothorax)	Anthrax (inhalational) Tularemia Plague (pneumonic)
Severe Illness or Death	CardiacArrest or CodeGroup or DeathGroup or (Hypotension and FeverPlus) or RespiratoryArrest or SepsisGroup or Shock	N/A

## Appendix 2: Maryland Health and Medical Region Definitions

Health and Medical Region	Counties Reporting to ESSENCE
Regions 1 & 2	Allegany County Frederick County Garrett County Washington County
Region 3	Anne Arundel County Baltimore City Baltimore County Carroll County Harford County Howard County
Region 4	Caroline County Cecil County Dorchester County Kent County Queen Anne's County Somerset County Talbot County Wicomico County Worcester County
Region 5	Calvert County Charles County Montgomery County Prince George's County St. Mary's County

