



## MARYLAND Department of Health

### **Public Health Preparedness and Situational Awareness Report: #2020:19**

Reporting for the week ending 05/09/20 (MMWR Week #19)

**May 15th, 2020**

#### **CURRENT HOMELAND SECURITY THREAT LEVELS**

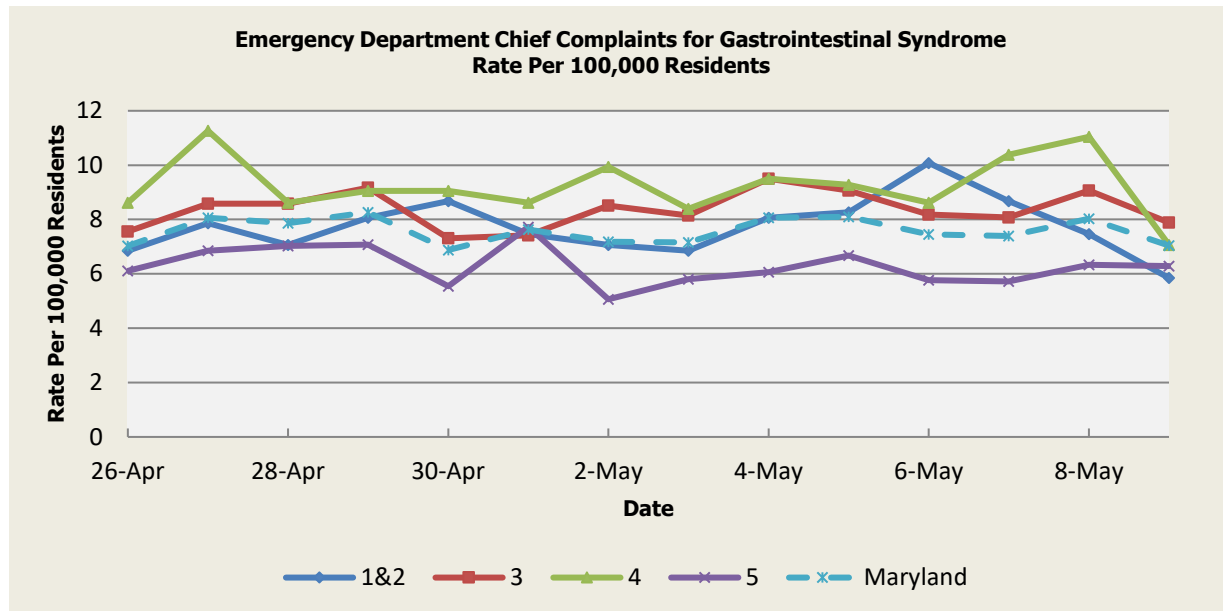
**National:** No Active Alerts  
**Maryland:** **FULL** (MEMA status)

### **SYNDROMIC SURVEILLANCE REPORTS**

**ESSENCE (Electronic Surveillance System for the Early Notification of Community-based Epidemics):** Graphical representation is provided for all syndromes (excluding the “Other” category; see Appendix 1) by Health and Medical Regions (See Appendix 2). Emergency department chief complaint data is presented as rates per 100,000 residents using data from the 2010 census. Electronic Surveillance System for the Early Notification of Community-Based Epidemics (ESSENCE). Baltimore, MD: Maryland Department of Health; 2019.

*(report continues on next page)*

## Gastrointestinal Syndrome



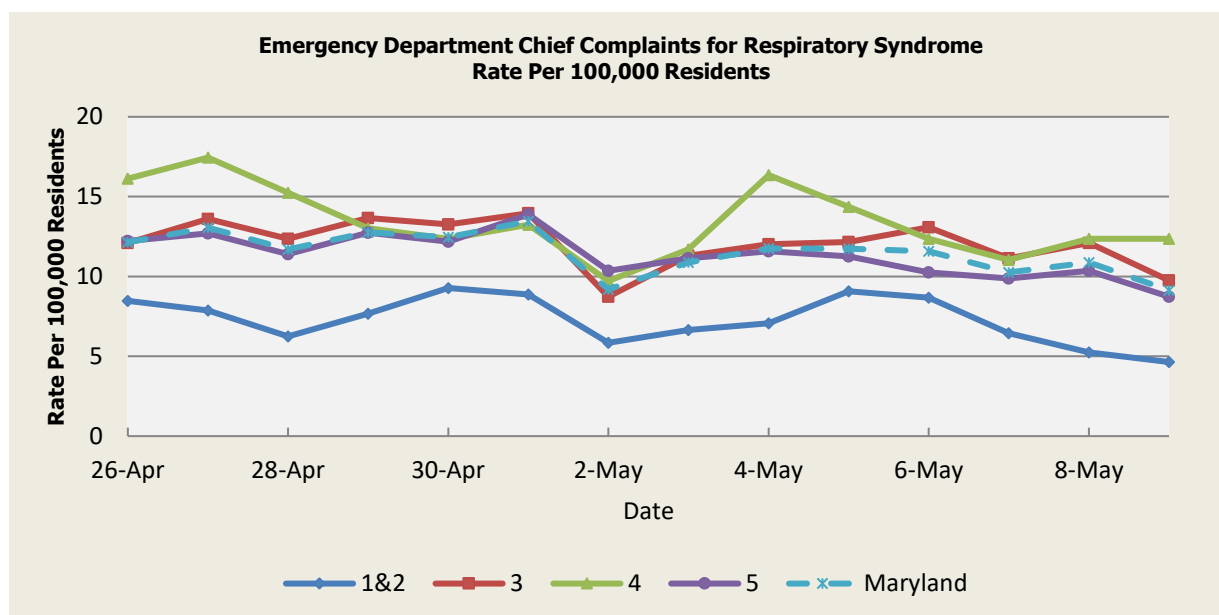
There were no Gastrointestinal Syndrome outbreaks reported this week.

Gastrointestinal Syndrome Baseline Data January 1, 2010 - Present					
Health Region	1&2	3	4	5	Maryland
Mean Rate*	13.31	15.03	15.94	10.27	13.13
Median Rate*	13.31	14.87	15.46	10.22	13.04

\* Per 100,000 Residents

(report continues on next page)

## Respiratory Syndrome



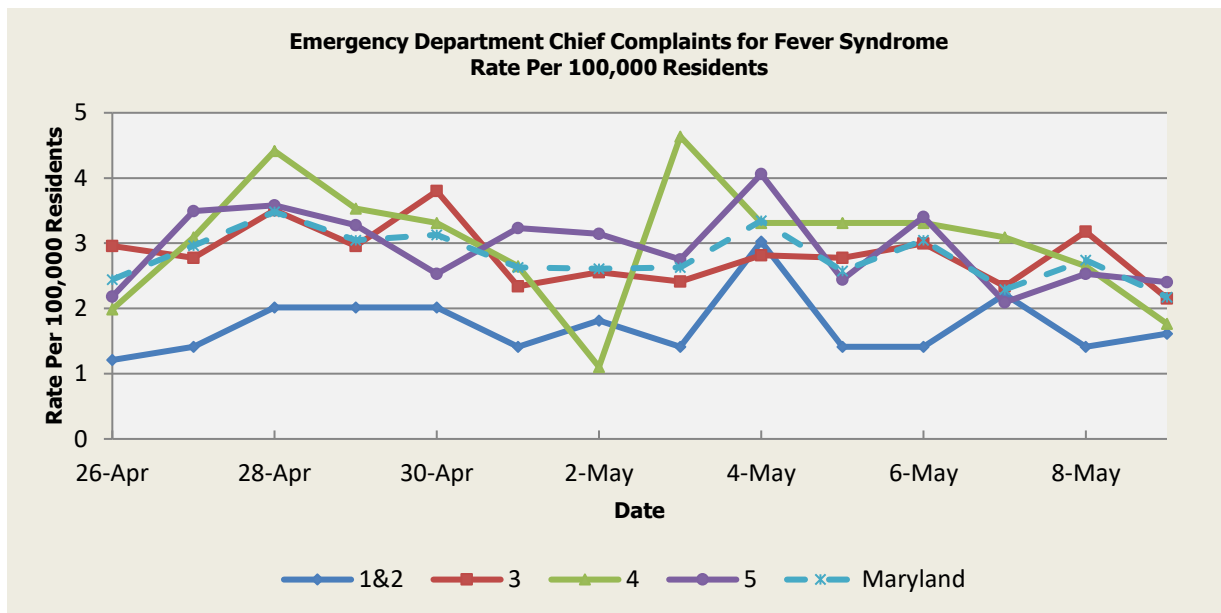
There were sixty-six (66) Respiratory Syndrome outbreaks reported this week: thirteen (13) outbreaks of COVID-19 in Assisted Living Facilities (Regions 3,5), one (1) outbreak of COVID-19 in a Camp (Region 5), one (1) outbreak of COVID-19 in a Correctional Facility (Region 4), four (4) outbreaks of COVID-19 in Daycare centers (Regions 3,5), one (1) outbreak of COVID-19 in a Dialysis Center (Region 5), thirty two (32) outbreaks of COVID-19 in Group Homes (Regions 3,4,5), one (1) outbreak of COVID-19 in a Shelter (Region 3), one (1) outbreak of COVID-19 in a Hospice (Region 4), three (3) outbreaks of COVID-19 in Hospitals (Region 3), one (1) outbreak of COVID-19 in a Substance Use Treatment Clinic (Region 3), seven (7) outbreaks of COVID-19 in Nursing Homes (Regions 3,4), one (1) outbreak of COVID-19 in a Treatment Program (Region 5).

Respiratory Syndrome Baseline Data January 1, 2010 - Present					
Health Region	1&2	3	4	5	Maryland
Mean Rate*	12.67	14.94	15.30	10.14	12.94
Median Rate*	12.30	14.34	14.57	9.74	12.42

\* Per 100,000 Residents

*(report continues on next page)*

## Fever Syndrome



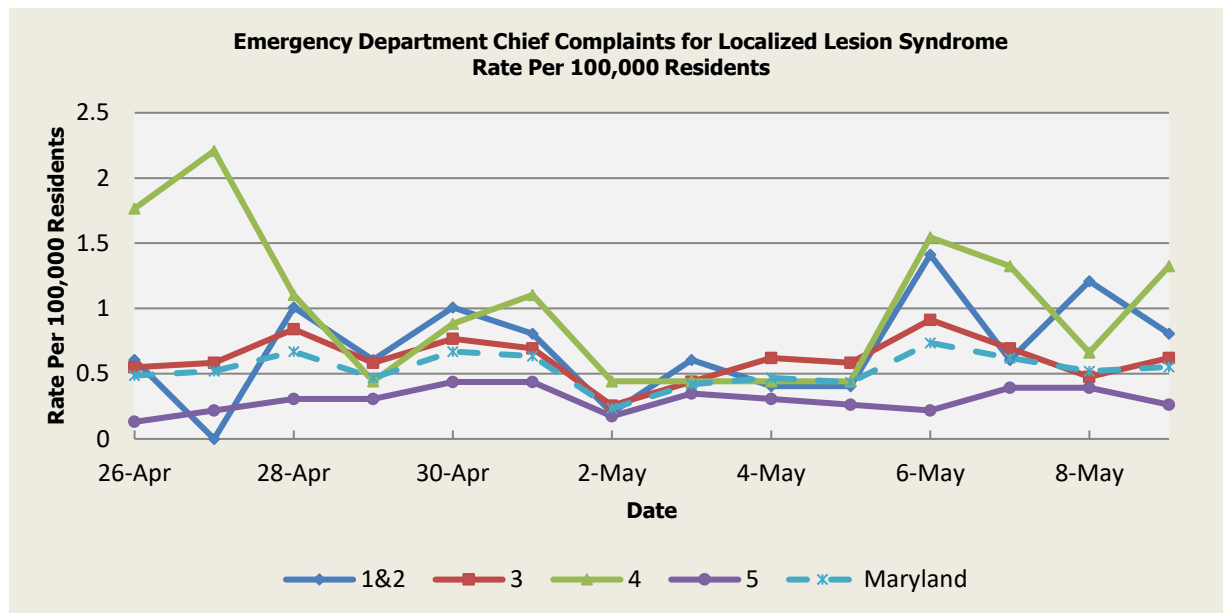
There were no Fever Syndrome outbreaks reported this week.

Fever Syndrome Baseline Data January 1, 2010 - Present					
Health Region	1&2	3	4	5	Maryland
Mean Rate*	3.11	3.94	4.17	3.08	3.56
Median Rate*	3.02	3.80	3.97	2.97	3.41

*\*Per 100,000 Residents*

*(report continues on next page)*

## Localized Lesion Syndrome



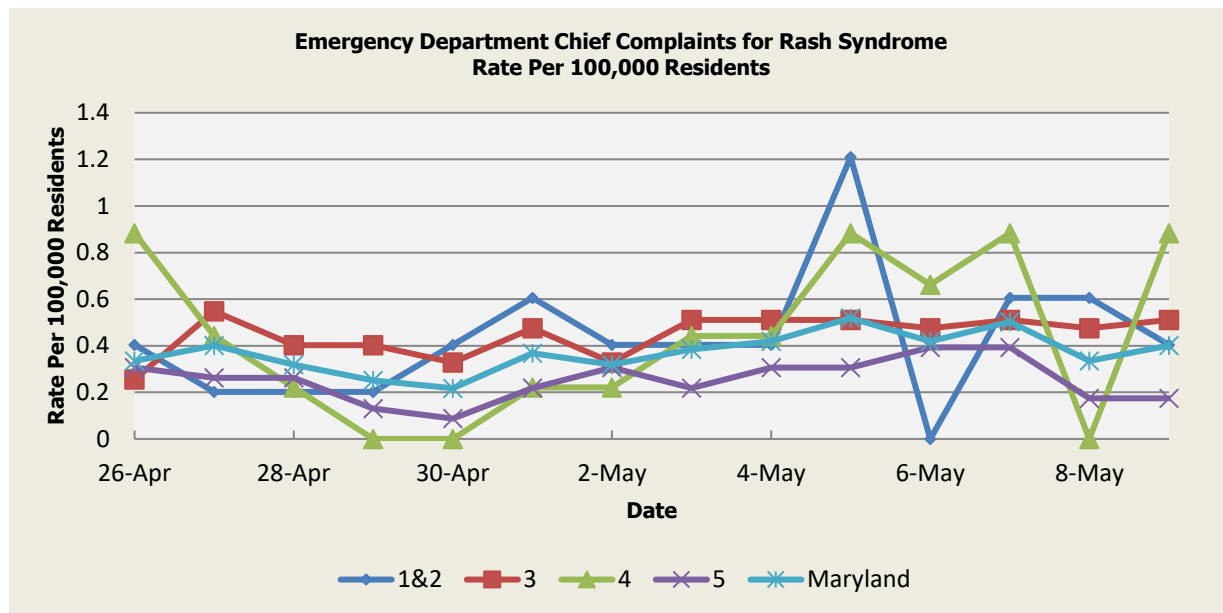
There were no Localized Lesion Syndrome outbreaks reported this week.

Localized Lesion Syndrome Baseline Data January 1, 2010 - Present					
Health Region	1&2	3	4	5	Maryland
Mean Rate*	1.16	1.75	2.01	0.89	1.39
Median Rate*	1.01	1.68	1.99	0.87	1.34

\* Per 100,000 Residents

*(report continues on next page)*

## Rash Syndrome



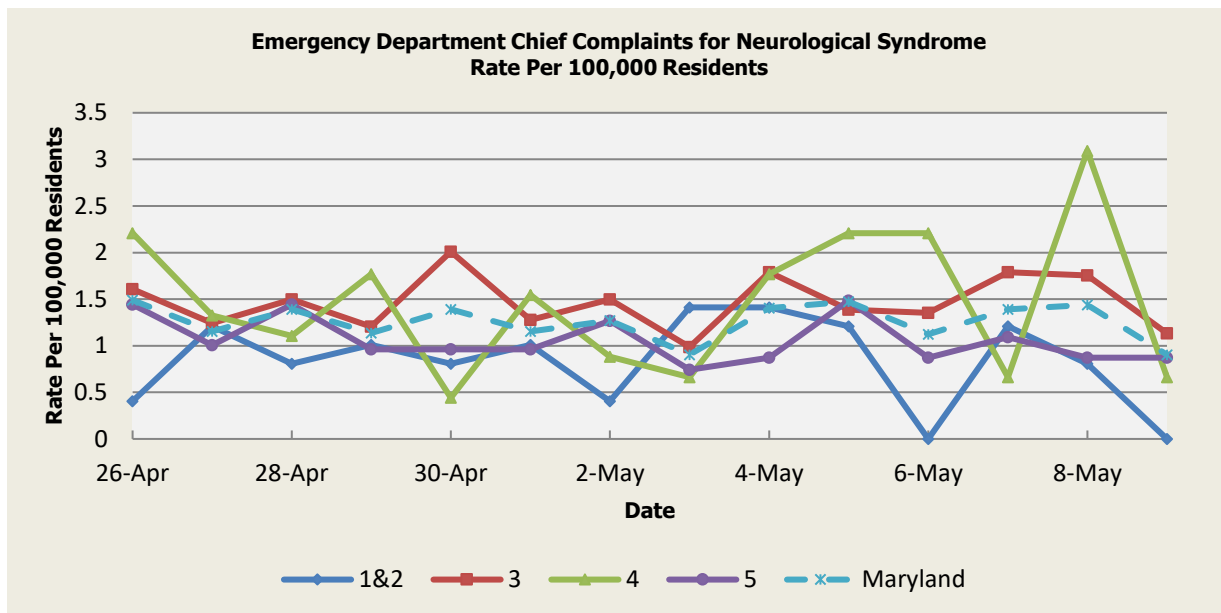
There was no Rash Syndrome outbreak reported this week.

Rash Syndrome Baseline Data January 1, 2010 - Present					
Health Region	1&2	3	4	5	Maryland
Mean Rate*	1.23	1.64	1.73	0.96	1.35
Median Rate*	1.21	1.57	1.55	0.92	1.31

\* Per 100,000 Residents

*(report continues on next page)*

## Neurological Syndrome



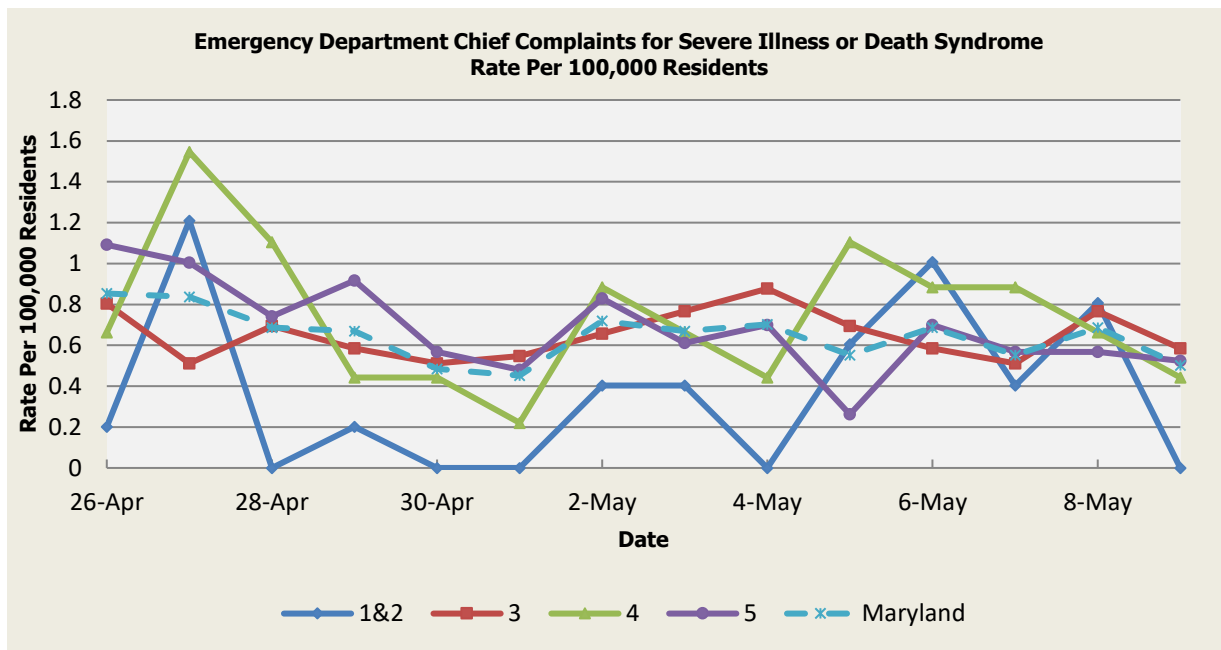
There were no Neurological Syndrome outbreaks reported this week.

Neurological Syndrome Baseline Data January 1, 2010 - Present					
Health Region	1&2	3	4	5	Maryland
Mean Rate*	0.81	0.99	0.91	0.63	0.83
Median Rate*	0.81	0.91	0.88	0.57	0.77

\* Per 100,000 Residents

*(report continues on next page)*

## Severe Illness or Death Syndrome



There were no Severe Illness or Death Syndrome outbreaks reported this week.

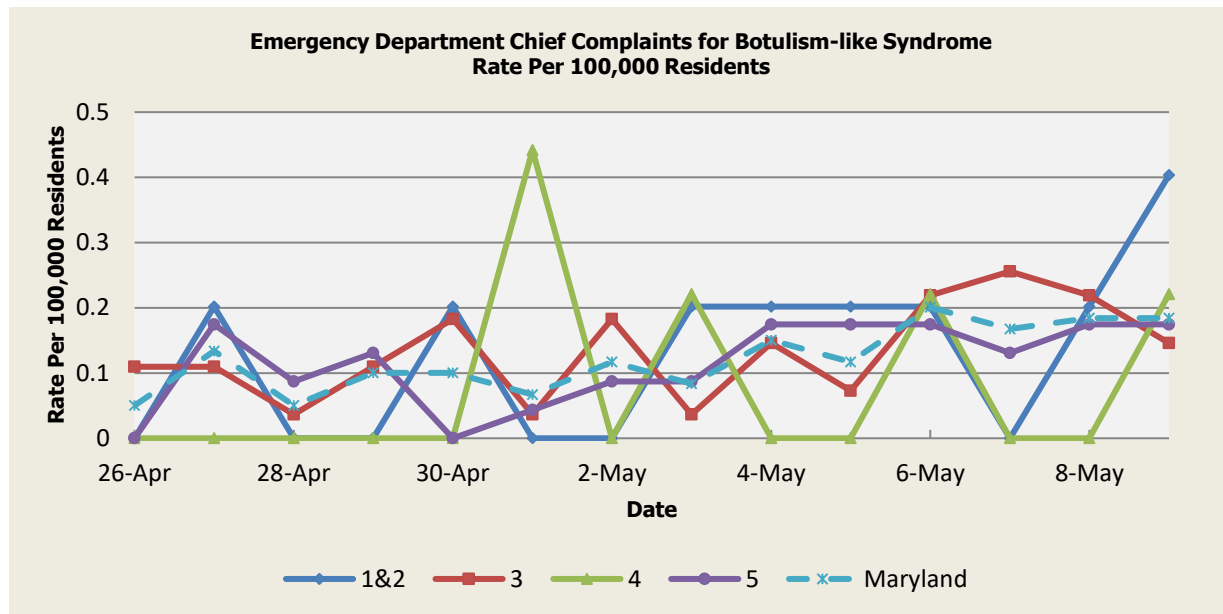
Severe Illness or Death Syndrome Baseline Data January 1, 2010 - Present					
Health Region	1&2	3	4	5	Maryland
Mean Rate*	0.65	0.89	0.84	0.53	0.73
Median Rate*	0.60	0.84	0.88	0.48	0.70

\* Per 100,000 Residents

*(report continues on next page)*

## **SYNDROMES RELATED TO CATEGORY A AGENTS**

### **Botulism-like Syndrome**



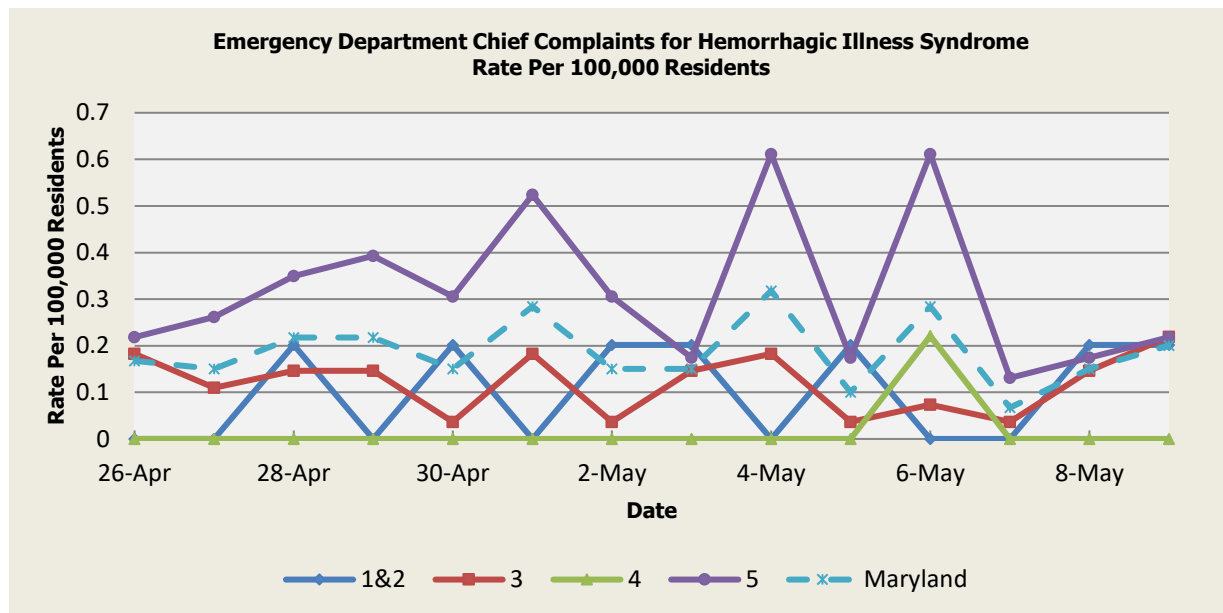
There was an appreciable increase above baseline in the rate of ED visits for Botulism-like Syndrome on, 4/27 (Regions 1&2,5), 4/30 (Regions 1&2), 5/1 (Region 4), 5/3 (Regions 1&2,4), 5/4 (Regions 1&2,5), 5/6 (Regions 1&2,4,5), 5/8 (Regions 1&2,5), 5/9 (Regions 1&2,4,5). These increases are not known to be associated with any outbreaks.

Botulism-like Syndrome Baseline Data January 1, 2010 - Present					
Health Region	1&2	3	4	5	Maryland
Mean Rate*	0.08	0.13	0.06	0.08	0.10
Median Rate*	0.00	0.11	0.00	0.04	0.08

\* Per 100,000 Residents

*(report continues on next page)*

## Hemorrhagic Illness Syndrome



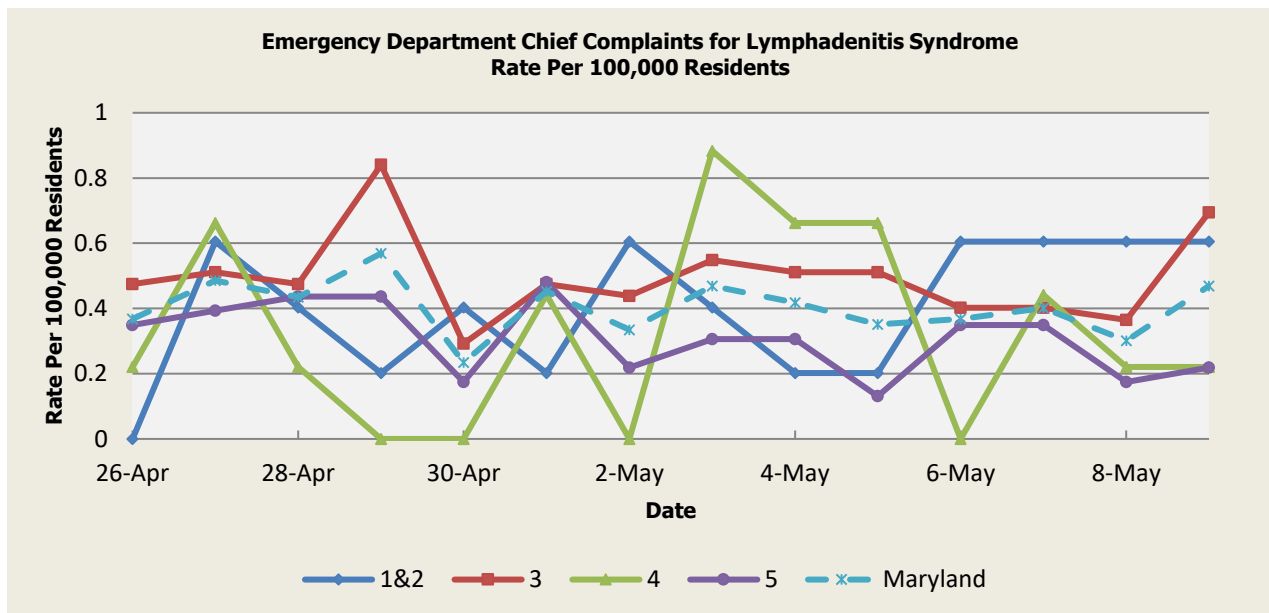
There was an appreciable increase above baseline in the rate of ED visits for Hemorrhagic Illness Syndrome on, 4/28 (Regions 1&2,5), 4/29 (Region 5), 4/30 (Regions 1&2,5), 5/1 (Region 5), 5/2 (Regions 1&2,5), 5/3 (Regions 1&2), 5/4 (Region 5), 5/5 (Regions 1&2), 5/6 (Regions 4,5), 5/8 (Regions 1&2), 5/9 (Regions 1&2). These increases are not known to be associated with any outbreaks.

Hemorrhagic Illness Syndrome Baseline Data January 1, 2010 - Present					
Health Region	1&2	3	4	5	Maryland
Mean Rate*	0.05	0.17	0.04	0.15	0.14
Median Rate*	0.00	0.11	0.00	0.09	0.10

\* Per 100,000 Residents

*(report continues on next page)*

## Lymphadenitis Syndrome



There was an appreciable increase above baseline in the rate of ED visits for Lymphadenitis Syndrome on, 5/3 (Region 4). This increase is not known to be associated with any outbreaks

Lymphadenitis Syndrome Baseline Data January 1, 2010 - Present					
Health Region	1&2	3	4	5	Maryland
Mean Rate*	0.39	0.60	0.41	0.39	0.49
Median Rate*	0.40	0.55	0.44	0.35	0.45

\* Per 100,000 Residents

(report continues on next page)

## **MARYLAND REPORTABLE DISEASE SURVEILLANCE**

### **Coronavirus Disease 2019 (COVID-19) Situation Summary**

On March 5<sup>th</sup>, 2020, the Maryland Department of Health announced the first cases of coronavirus disease 2019 (abbreviated COVID-19) in the State of Maryland.

#### **Confirmed COVID-19 Case Counts in Maryland by County (As of May 15th, 2020)**

<b>County</b>	<b>Number of Confirmed Cases</b>
Allegany	151
Anne Arundel	2,752
Baltimore City	3,606
Baltimore County	4,399
Calvert	228
Caroline	190
Carroll	635
Cecil	300
Charles	829
Dorchester	107
Frederick	1,364
Garrett	6
Harford	671
Howard	1,313
Kent	131
Montgomery	7,759
Prince George's	10,791
Queen Anne's	108
Somerset	54
St. Mary's	299
Talbot	65
Washington	320
Wicomico	777
Worcester	131
<b>Total</b>	<b>36,986</b>

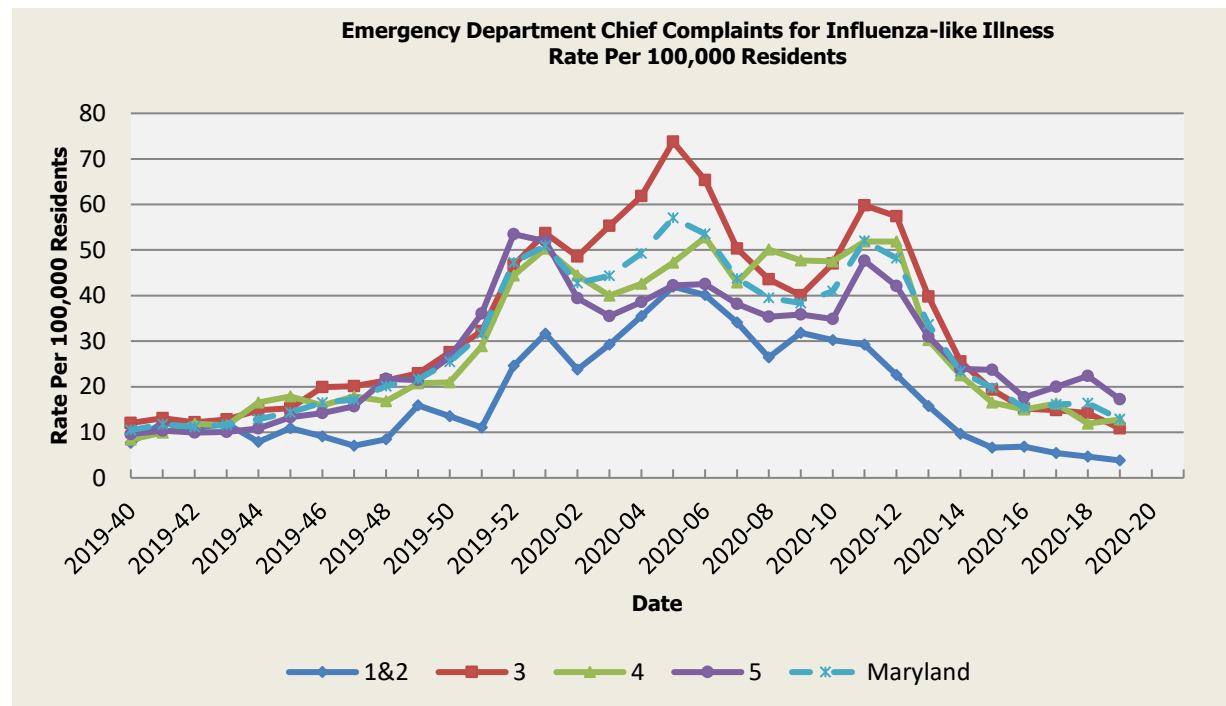
The most up-to-date information may be found on the Maryland Department of Health website at <https://coronavirus.maryland.gov>.

*(report continues on next page)*

## **SYNDROMIC INFLUENZA SURVEILLANCE**

Seasonal Influenza reporting occurs from MMWR Week 40 through MMWR Week 20 (October 2019 through May 2020). Seasonal Influenza activity for Week 19 was: Moderate Activity and Local Geographic Activity.

### **Influenza-like Illness**

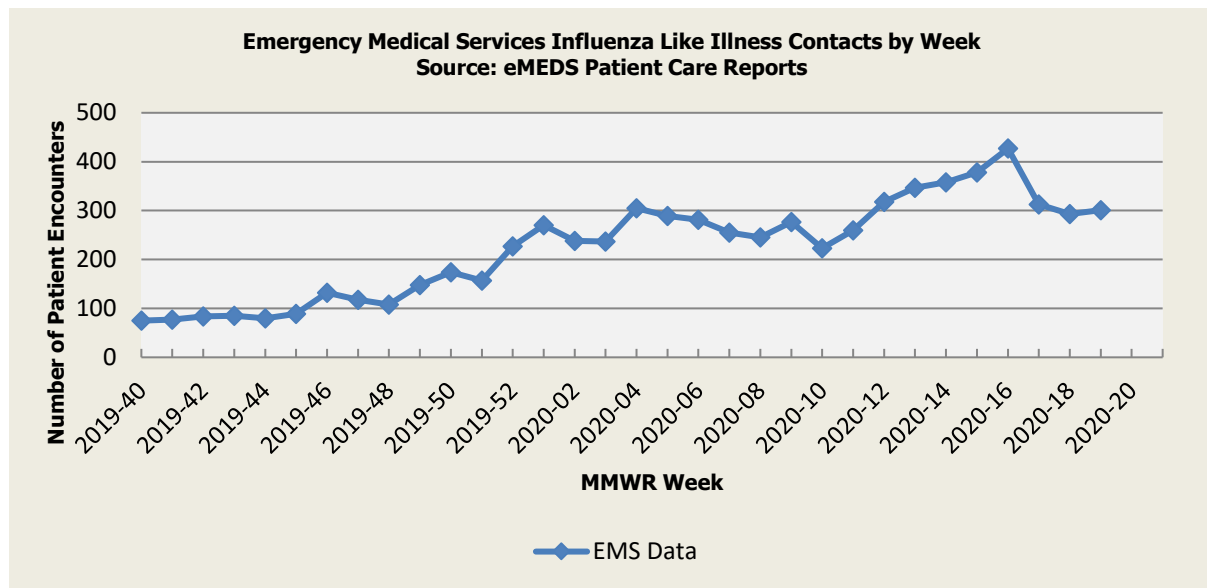


Influenza-like Illness Baseline Data Week 1 2010 - Present					
Health Region	1&2	3	4	5	Maryland
Mean Rate*	10.61	14.41	13.72	12.19	13.19
Median Rate*	7.86	10.69	9.72	9.04	9.77

\* Per 100,000 Residents

*(report continues on next page)*

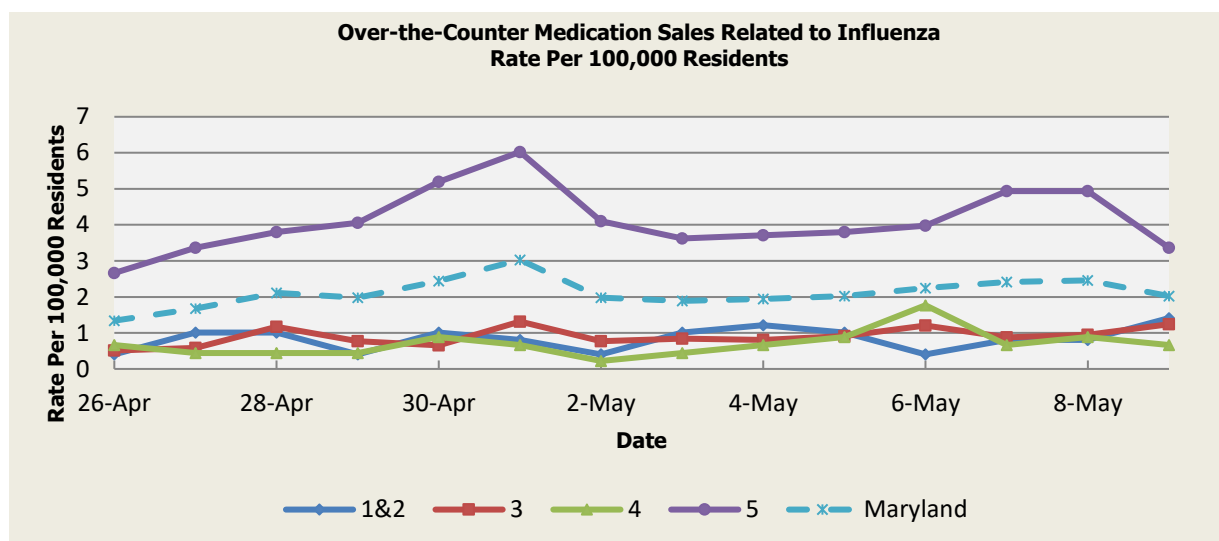
## Influenza-like Illness Contacts by Week



**Disclaimer on eMEDS flu related data:** These data are based on EMS Pre-hospital care reports where the EMS provider has selected “flu like illness” as a primary or secondary impression of a patient’s illness. This impression is solely based on the signs and symptoms seen by the provider, not on any diagnostic tests. Since these numbers do not include all primary or secondary impressions that may be seen with influenza the actual numbers may be low. These data are reported for trending purposes only.

*(report continues on next page)*

## Over-the-Counter Influenza-Related Medication Sales



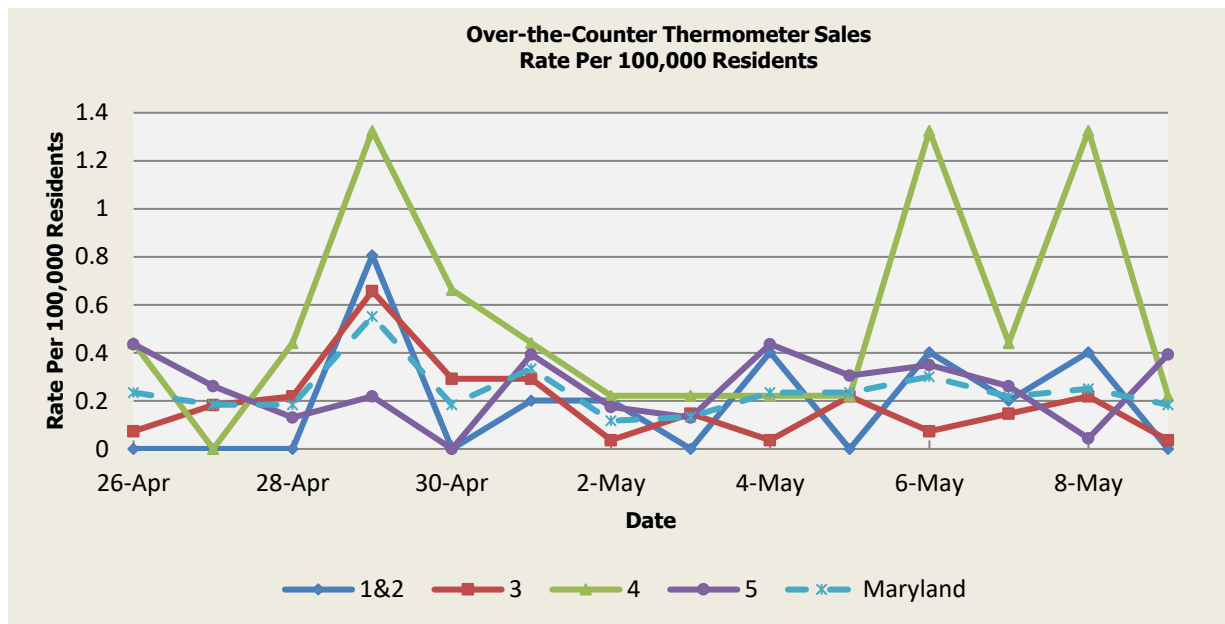
There was no appreciable increase above baseline in the rate of OTC Medication Sales during this reporting period.

OTC Medication Sales Baseline Data January 1, 2010 - Present					
Health Region	1&2	3	4	5	Maryland
Mean Rate*	3.40	4.34	2.64	7.74	5.44
Median Rate*	2.62	3.43	2.21	6.99	4.67

\* Per 100,000 Residents

*(report continues on next page)*

## Over-the-Counter Thermometer Sales



There was no appreciable increase above baseline in the rate of OTC Thermometer Sales during this reporting period.

Thermometer Sales Baseline Data January 1, 2010 - Present					
Health Region	1&2	3	4	5	Maryland
Mean Rate*	2.84	2.69	2.16	3.57	3.00
Median Rate*	2.62	2.59	1.99	3.54	2.98

\* Per 100,000 Residents

*(report continues on next page)*

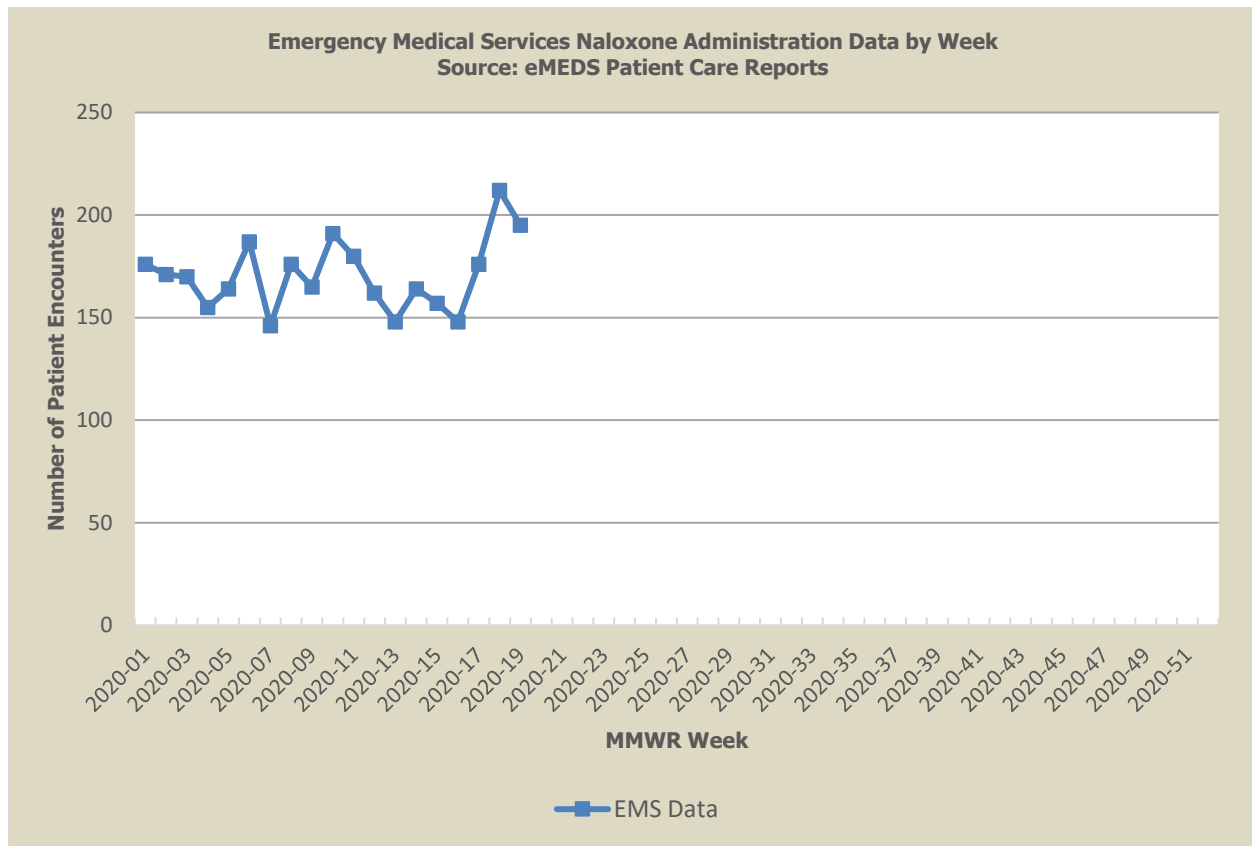
## **SYNDROMIC OVERDOSE SURVEILLANCE**

The purpose of this section is to characterize non-fatal ED visit trends for acute unintentional overdose by Heroin, Opioid or Unspecified substance among Maryland residents captured by ESSENCE data, including chief complaint and discharge diagnosis. ED visits that are identified as unintentional overdose by Heroin, Opioid or Unspecified substance include those with medical and non-medical use of a prescription Opioid or where the substance is not specified, given evidence that most fatal overdoses are Opioid-related.

In preparation for the release of new ESSENCE queries for identifying heroin, opioid and all drug overdoses, please note that we have removed the data chart showing unintentional overdose rates by heroin, opioid, or unspecified substances. These new data, when available, will be presented below.

*(report continues on next page)*

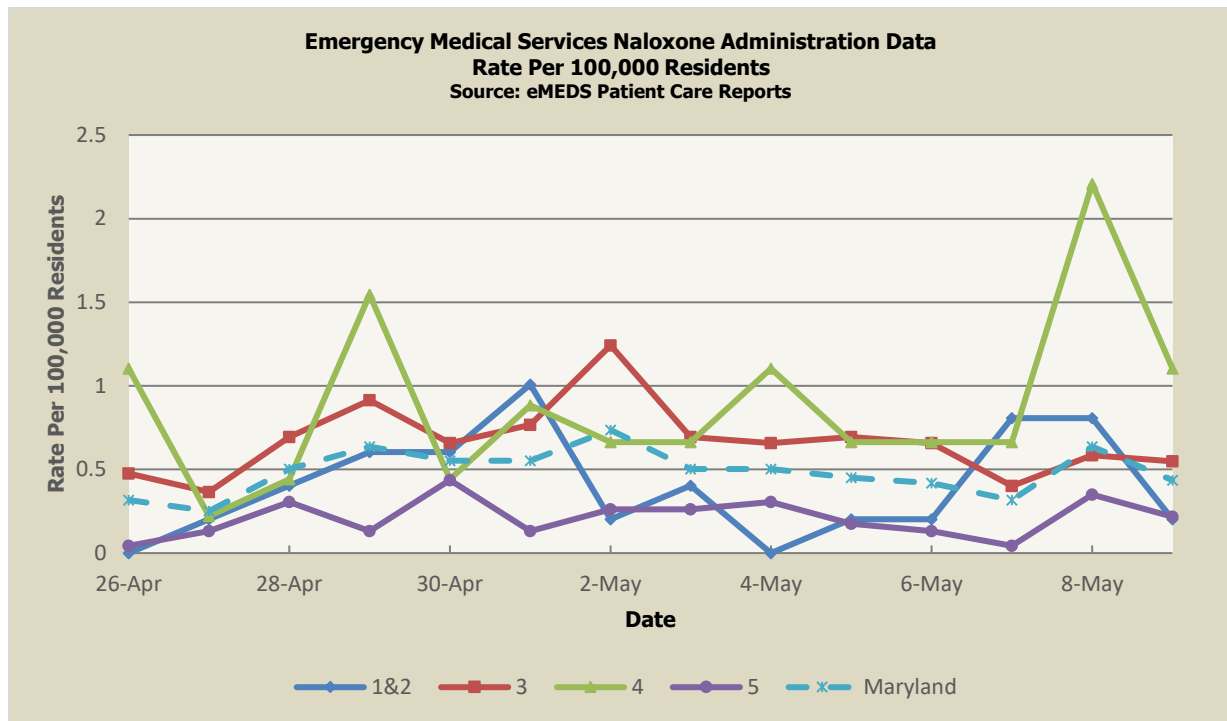
## Naloxone Administration Data by Week



**Disclaimer on eMEDS naloxone administration related data:** These data are based on EMS Pre-hospital care reports where the EMS provider has documented that they administered naloxone. The administration of naloxone is based on the patient's signs and symptoms and not on any diagnostic tests. These data are reported for trending purposes only.

*(report continues on next page)*

## Naloxone Administration Data



**Disclaimer on eMEDS Naloxone administration related data:** These data are based on EMS Pre-hospital care reports where the EMS provider has documented that they administered naloxone. The administration of naloxone is based on the patient's signs and symptoms and not on any diagnostic tests. These data are reported for trending purposes only.

*(report continues on next page)*

## **PANDEMIC INFLUENZA UPDATE / AVIAN INFLUENZA-RELATED REPORTS**

**WHO update:** The current WHO phase of pandemic alert for avian influenza is ALERT. Currently, the avian influenza H5N1 virus continues to circulate in poultry in some countries, especially in Asia and northeast Africa. This virus continues to cause sporadic human infections with some instances of limited human-to-human transmission among very close contacts. There has been no sustained human-to-human or community-level transmission identified thus far.

Influenza A (H7N9) is one of a subgroup of influenza viruses that normally circulate among birds. Until recently, this virus had not been seen in people. However, human infections have now been detected. Presently, there is limited information about the scope of the disease the virus causes and about the source of exposure. The disease is of concern because most patients have been severely ill. There is no indication thus far that it can be transmitted between people, but both animal-to-human and human-to-human routes of transmission are being actively investigated.

**Alert phase:** This is the phase when influenza caused by a new subtype has been identified in humans. Increased vigilance and careful risk assessment, at local, national, and global levels are characteristic of this phase. If the risk assessments indicate that the new virus is not developing into a pandemic strain, a de-escalation of activities towards those in the interpandemic phase may occur. As of May 14th, 2020, the WHO-confirmed global total (2003-2020) of human cases of H5N1 avian influenza virus infection stands at 861, of which 455 have been fatal. Thus, the case fatality rate for human H5N1 is approximately 53%.

## **AVIAN INFLUENZA**

**AVIAN INFLUENZA (VIETNAM)**, 11 May 2020, Information received on [and dated] 10 May 2020 from Dr. Dong Pham Van, Director General, Chief Veterinary Officer, Department of Animal Health, Ministry of Agriculture and Rural Development, Hanoi, Viet Nam. Read More: <https://promedmail.org/promed-post/?id=7323954>

## **HUMAN AVIAN INFLUENZA**

*There were no relevant human avian influenza reports this week*

## **NATIONAL DISEASE REPORTS**

**INVASIVE MOSQUITO (FLORIDA)**, 11 May 2020, A yellow fever mosquito was discovered in Gainesville for the 1st time since the early '90s. In a Facebook post [Tue 5 May 2020], Gainesville's Public Works Department wrote that a yellow fever mosquito was found downtown this week. Read More: <https://promedmail.org/promed-post/?id=7321549>

**UNDIAGNOSED PEDIATRIC INFLAMMATORY SYNDROME (MULTISTATE)**, 9 May 2020, New York now has 73 cases of children presenting with a new pediatric multisystem inflammatory syndrome likely linked to COVID-19 -- and at least one child has died of the

condition and a 2nd death is under investigation, officials said on Friday [8 May 2020]. Read More: <https://promedmail.org/promed-post/?id=7315405>

**PARALYTIC SHELLFISH POISONING (WASHINGTON)**, 8 May 2020, Paralytic shellfish poisoning (PSP) biotoxin has reached unsafe levels in molluscan shellfish in Drayton Harbor. To protect the public, the Washington State Department of Health (DOH) closed recreational harvest on all beaches from Birch Point north to the Canadian Border including all of Point Roberts. Read More: <https://promedmail.org/promed-post/?id=7311953>

## **INTERNATIONAL DISEASE REPORTS**

**CORONAVIRUS DISEASE 2019 (COVID-19) UPDATES (GLOBAL)**, 14 May 2020, according to the data on the World meter website, the total number of cases of COVID-19 worldwide is now 4 342 335, with reports of cases by 216 countries and territories worldwide. The total number of confirmed cases reported from outside China now represents 98.1% of the total number of reported cases. Read More: <https://promedmail.org/promed-post/?id=7329840>

**JAPANESE ENCEPHALITIS & OTHER (INDIA)**, 14 May 2020, At least 2 persons tested positive along with 15 others falling ill due to Japanese encephalitis within the district of Jorhat, said Dr. Pawan Chandra Saikia, the chief medical officer of Jorhat, on Tuesday [12 May 2020]. Read More: <https://promedmail.org/promed-post/?id=7337503>

**HANTAVIRUS (PANAMA)**, 14 May 2020, The Ministry of Health (MINSa) announced that some 7 patients affected by [a] hantavirus are currently progressing positively from the disease in central provinces. Read More: <https://promedmail.org/promed-post/?id=7333741>

**LISTERIOSIS (SWITZERLAND)**, 14 May 2020, A total of 4 patients have been infected by Listeria and one has died after eating potentially contaminated cheese at a hospital in Switzerland. Read More: <https://promedmail.org/promed-post/?id=7333682>

**METHANOL POISONING (MEXICO)**, 13 May 2020, Police in Mexico are searching for the source of adulterated alcohol, which has killed 46 people in the states of Morelos and Puebla. People started falling ill on Sunday [10 May 2020]. Read More: <https://promedmail.org/promed-post/?id=7333102>

**TULAREMIA (CANADA)**, 12 May 2020, The Haldimand-Norfolk Health Unit issued an alert about the contagious outbreak Monday [11 May 2020]. The latest aggressive pathogen has been detected in the muskrat population of southwest Norfolk. Read More: <https://promedmail.org/promed-post/?id=7326726>

## **OTHER RESOURCES AND ARTICLES OF INTEREST**

More information concerning Public Health and Emergency Preparedness can be found at the Office of Preparedness and Response website: <http://preparedness.health.maryland.gov/> or follow us on Facebook at [www.facebook.com/MarylandOPR](http://www.facebook.com/MarylandOPR).

More data and information on influenza can be found on the MDH website:  
<http://phpa.health.maryland.gov/influenza/fluwatch/Pages/Home.aspx>

Please participate in the Maryland Resident Influenza Tracking System (MRITS):  
<http://flusurvey.health.maryland.gov>

\*\*\*\*\*

**NOTE:** This weekly review is a compilation of data from various surveillance systems, interpreted with a focus on a potential BT event. It is not meant to be inclusive of all epidemiology data available, nor is it meant to imply that every activity reported is a definitive BT event. International reports of outbreaks due to organisms on the CDC Critical Biological Agent list will also be reported. While not "secure", please handle this information in a professional manner. Please feel free to distribute within your organization, as you feel appropriate, to other professional staff involved in emergency preparedness and infection control.

For questions about the content of this review or if you have received this and do not wish to receive these weekly notices, please e-mail us. If you have information that is pertinent to this notification process, please send it to us to be included in the routine report.

### **Prepared By:**

Office of Preparedness and Response, Maryland Department of Health  
300 W. Preston Street, Suite 202, Baltimore, MD 21201  
Fax: 410-333-5000

Peter Fotang, MD, MPH  
Epidemiologist, Biosurveillance Program  
Office: 410-767-8438  
Email: [Peter.Fotang@maryland.gov](mailto:Peter.Fotang@maryland.gov)

Jennifer Stanley, MPH  
Epidemiologist, Biosurveillance Program  
Office: 410-767-2074  
Email: [Jennifer.Stanley@Maryland.gov](mailto:Jennifer.Stanley@Maryland.gov)

Jessica Acharya (Goodell), MPH  
Career Epidemiology Field Officer, CDC  
Office: 410-767-6745  
Email: [Jessica.Goodell@maryland.gov](mailto:Jessica.Goodell@maryland.gov)

## Appendix 1: ESSENCE Syndrome Definitions and Associated Category A Conditions

Syndrome	ESSENCE Definition	Category A Conditions
Botulism-like	(Botulism or (DifficultyFocusing and DifficultySpeaking) or (DifficultySpeaking and DifficultySwallowing) or (DifficultySwallowing and DifficultyFocusing) or DoubleVision or FacialParalysis or GuillainBarre or Ptosis) and not GeneralExclusions	Botulism
Fever	(Chills or (FeverPlus and (Drowsiness or Seizure)) or FeverOnly or SepsisGroup or ViralSyndrome) and not GeneralExclusions	N/A
Gastrointestinal	(AbdominalCramps or AbdominalPainGroup or Diarrhea or FoodPoisoning or Gastroenteritis or GIBleeding or Peritonitis or Vomiting) and not (GeneralExclusions or Gynecological or Obstetric or Reproductive or UrinaryTract)	Anthrax (gastrointestinal)
Hemorrhagic Illness	(FeverOrChills and (AcuteBloodAbnormalitiesGroup or BleedingFromMouth or BleedingGums or GIBleeding or Hematemesis or Hemoptysis or Nosebleed or Petechiae or Purpura)) and not GeneralExclusions	Viral Hemorrhagic Fever
Localized Lesion	(Boils or Bump or Carbuncle or DepressedUlcer or Eschar or Furuncle or InsectBite or SkinAbscess or (SkinSores and not AllOverBody) or SkinUlcer or SpiderBite) and not (GeneralExclusions or Decubitus or Diabetes or StasisUlcer)	Anthrax (cutaneous) Tularemia
Lymphadenitis	(BloodPoisoning or Bubo or CatScratchDisease or SwollenGlands) and not GeneralExclusions	Plague (bubonic)
Neurological	(([Age<75] and AlteredMentalStatus) or (FeverPlus and (Confusion or Drowsiness or Petechiae or StiffNeck)) or Delirium or Encephalitis or Meningitis or UnconsciousGroup) and not GeneralExclusions	N/A
Rash	(ChickenPox or Measles or RashGeneral or Roseola or (Rubella and not Pregnancy) or Shingles or (SkinSores and AllOverBody) or Smallpox) and not GeneralExclusions	Smallpox
Respiratory	(Anthrax or Bronchitis or (ChestPain and [Age<50]) or Cough or Croup or DifficultyBreathing or Hemothorax or Hypoxia or Influenza or Legionnaires or LowerRespiratoryInfection or Pleurisy or Pneumonia or RespiratoryDistress or RespiratoryFailure or RespiratorySyncytialVirus or RibPain or ShortnessOfBreath or Wheezing) and not (GeneralExclusions or Cardiac or (ChestPain and Musculoskeletal) or Hyperventilation or Pneumothorax)	Anthrax (inhalational) Tularemia Plague (pneumonic)
Severe Illness or Death	CardiacArrest or CodeGroup or DeathGroup or (Hypotension and FeverPlus) or RespiratoryArrest or SepsisGroup or Shock	N/A

## Appendix 2: Maryland Health and Medical Region Definitions

Health and Medical Region	Counties Reporting to ESSENCE
Regions 1 & 2	Allegany County Frederick County Garrett County Washington County
Region 3	Anne Arundel County Baltimore City Baltimore County Carroll County Harford County Howard County
Region 4	Caroline County Cecil County Dorchester County Kent County Queen Anne's County Somerset County Talbot County Wicomico County Worcester County
Region 5	Calvert County Charles County Montgomery County Prince George's County St. Mary's County

