



MARYLAND Department of Health

Larry Hogan, Governor · Boyd Rutherford, Lt. Governor · Dennis Schrader, Secretary

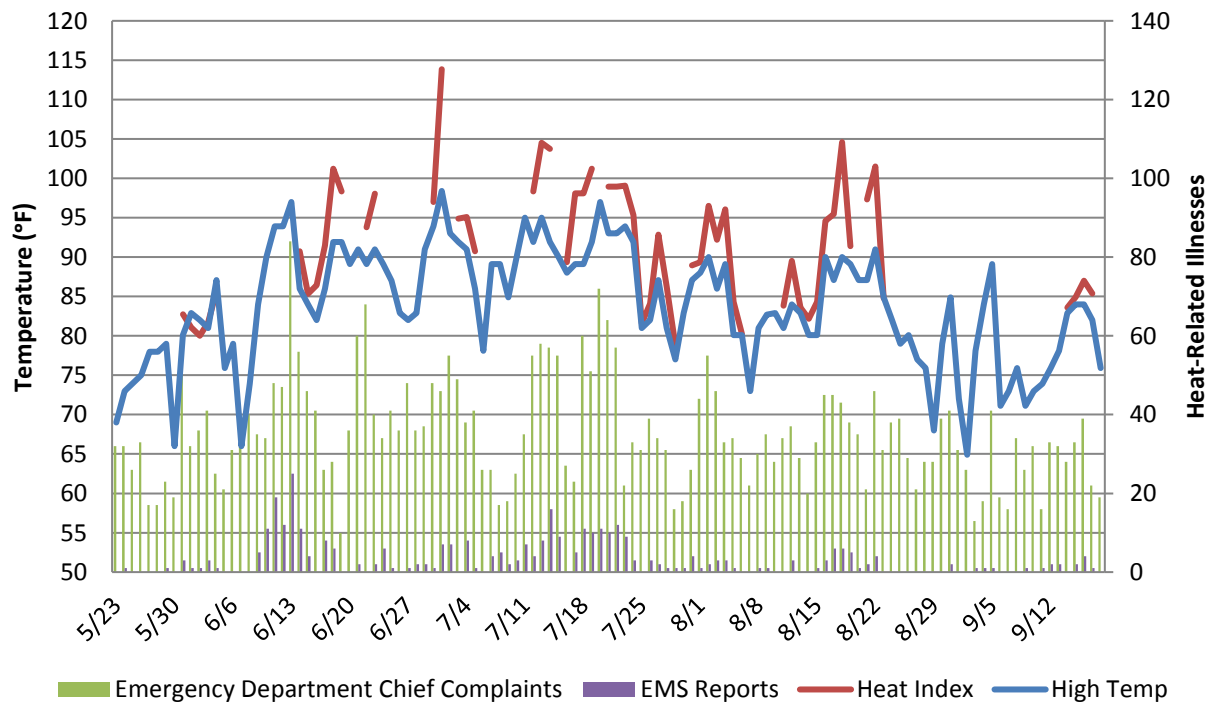
2017 Heat-related Illness Surveillance Report

October 11, 2017

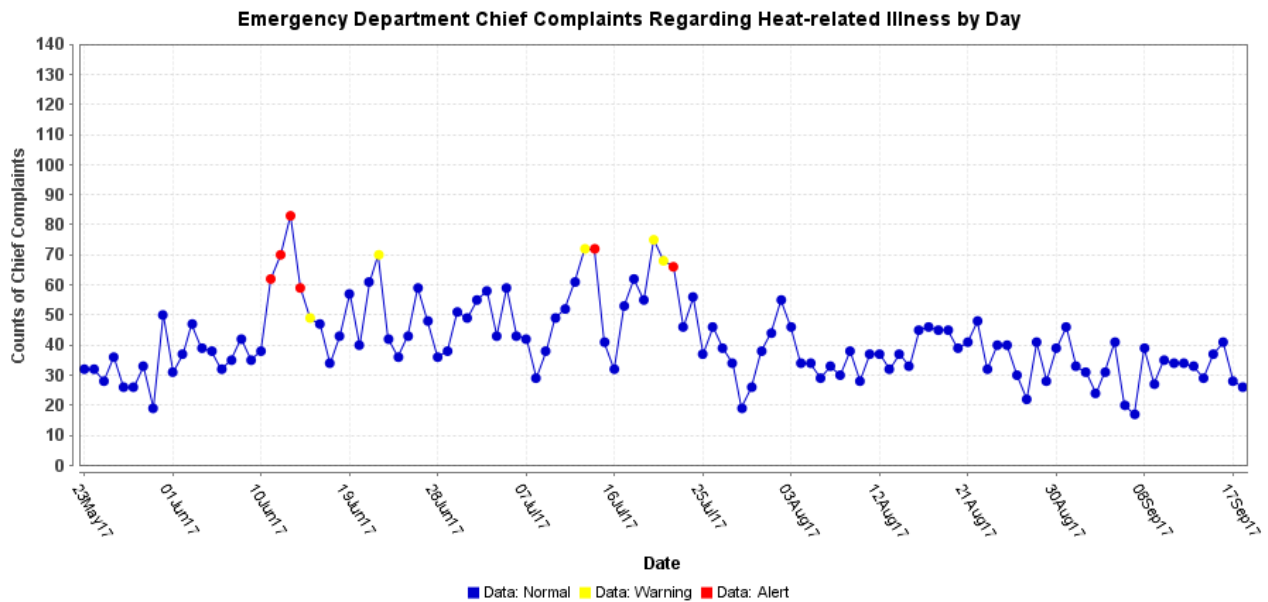
Reporting for May 23, 2017 through September 18, 2017

Total Heat Advisory Days: 6 (7/13, 7/14, 7/20-7/22, 8/18)

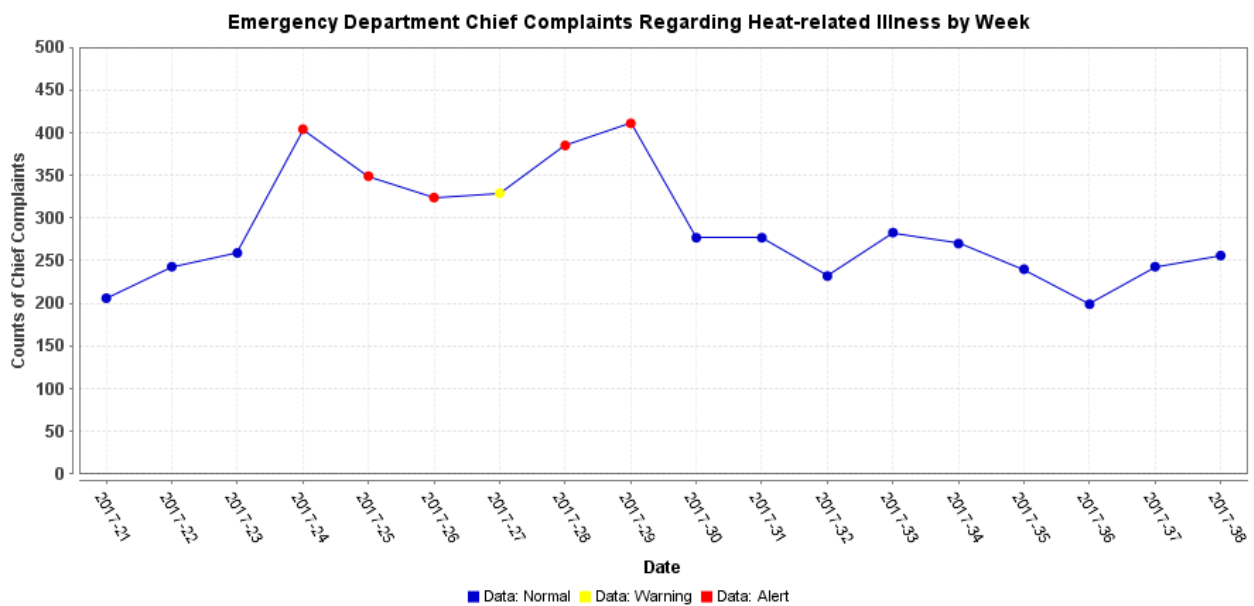
Temperature Data May-September 2017



Note: A Heat Index can only be calculated with a temperature above 80°F and humidity over 43%.

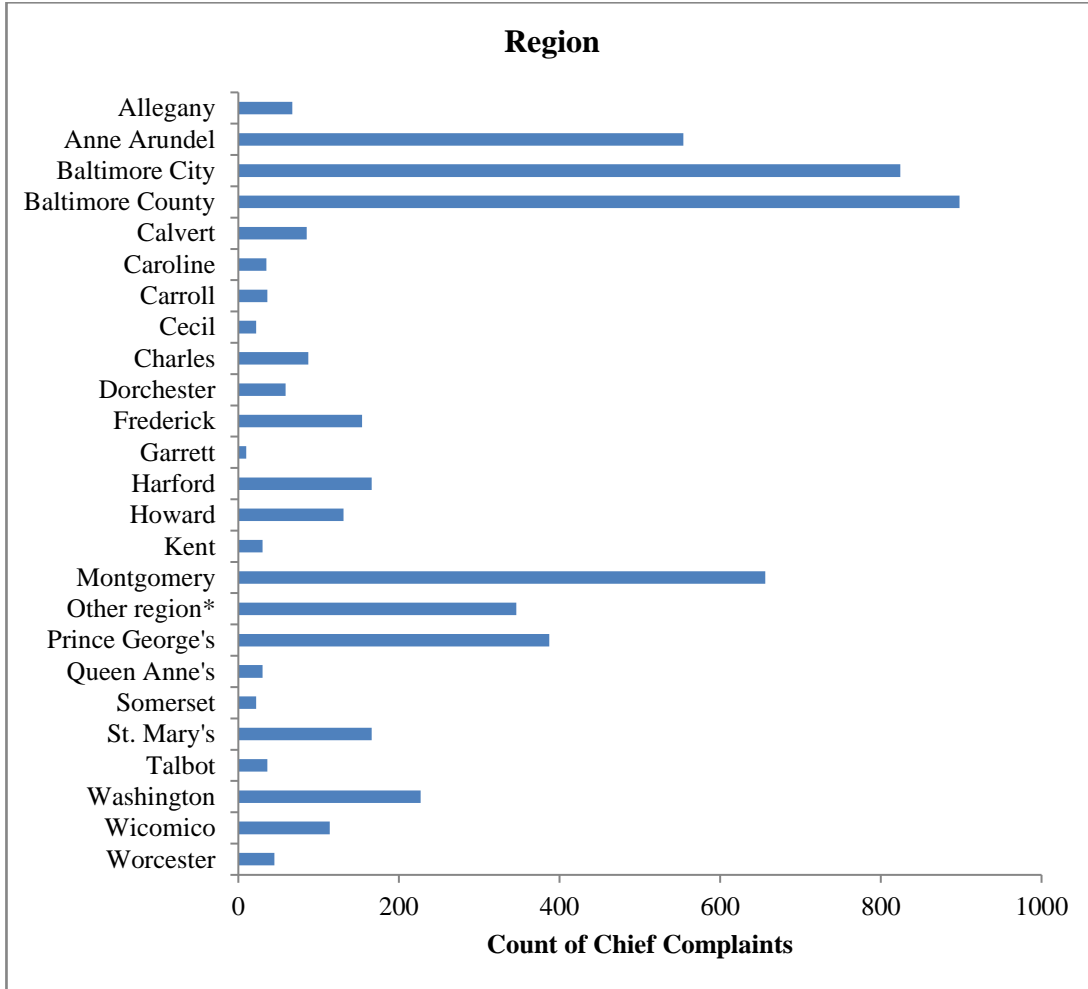


Note: ESSENCE chief complaint query contains the following terms: hyperthermia, heat, dehydration and sunburn

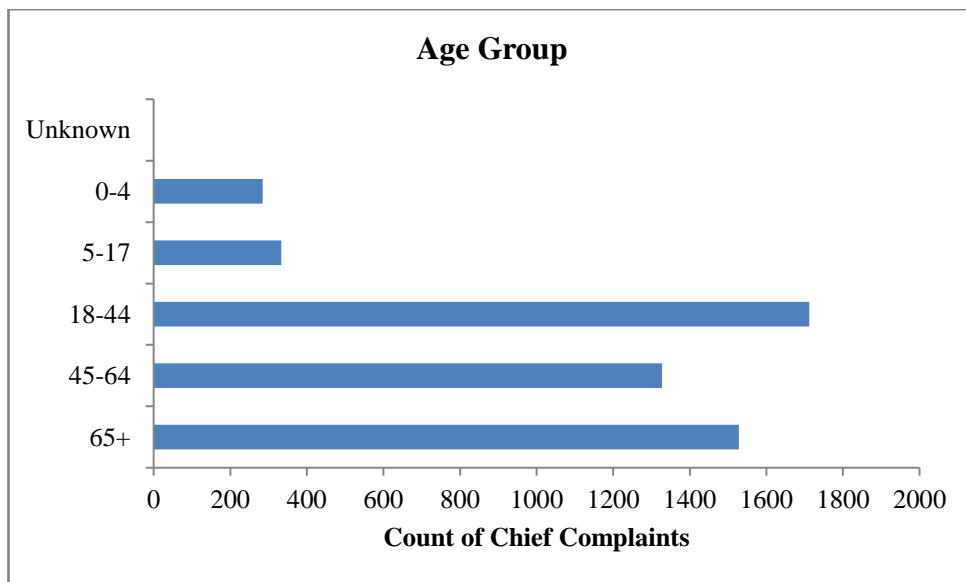


Note: ESSENCE chief complaint query contains the following terms: hyperthermia, heat, dehydration and sunburn

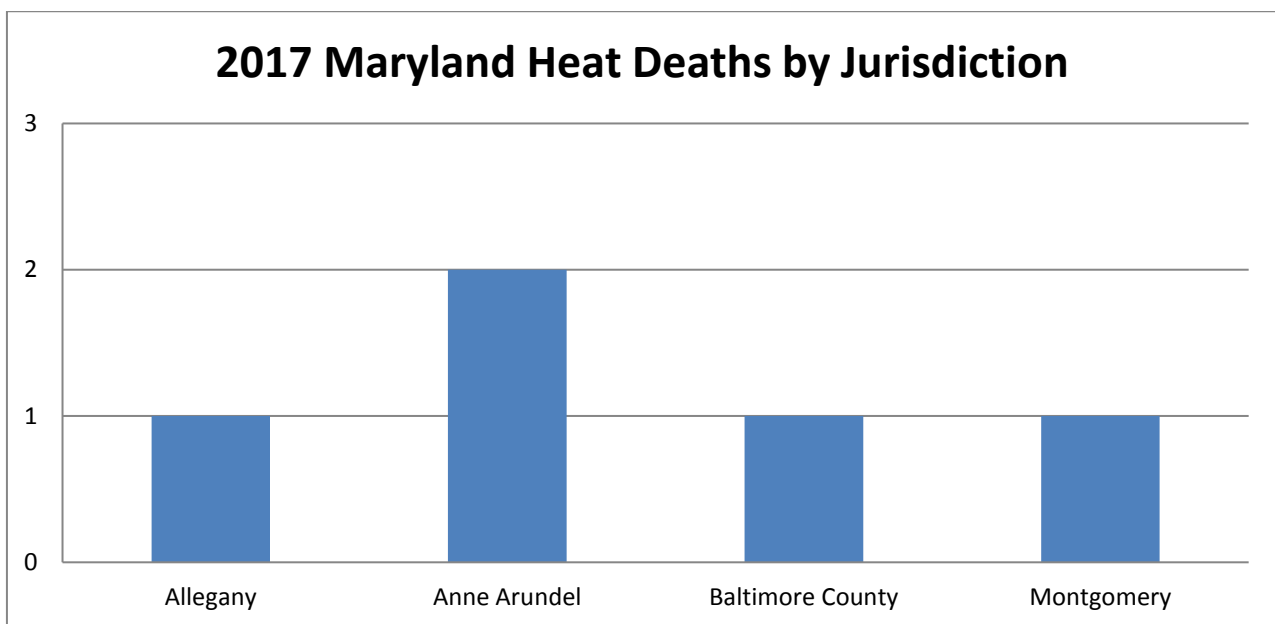
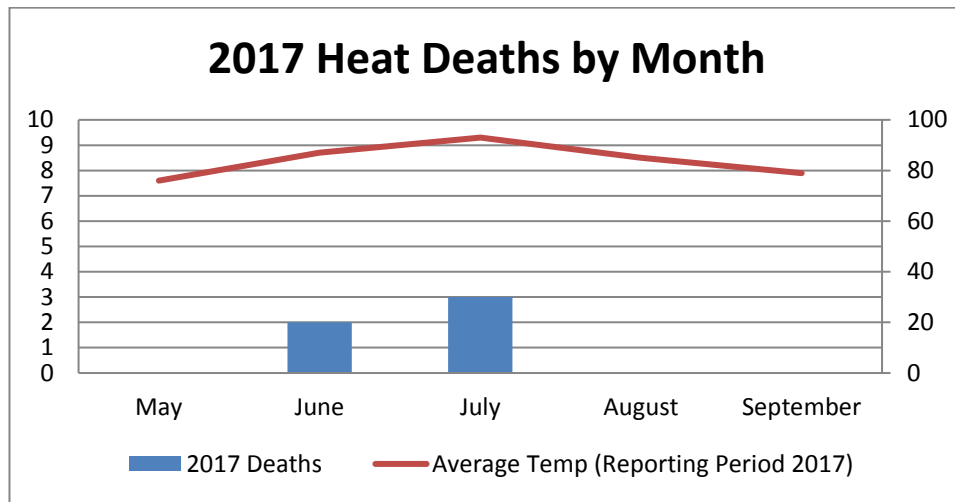
Geographical and Age Group Distribution of Emergency Department Chief Complaints Regarding Heat-related Illness for May 23 – September 18, 2017



*Geographical distribution of emergency department chief complaints is based on patients' jurisdictions of residence. The "Other Region" category includes patient records without a ZIP code and patients who reside outside of Maryland.

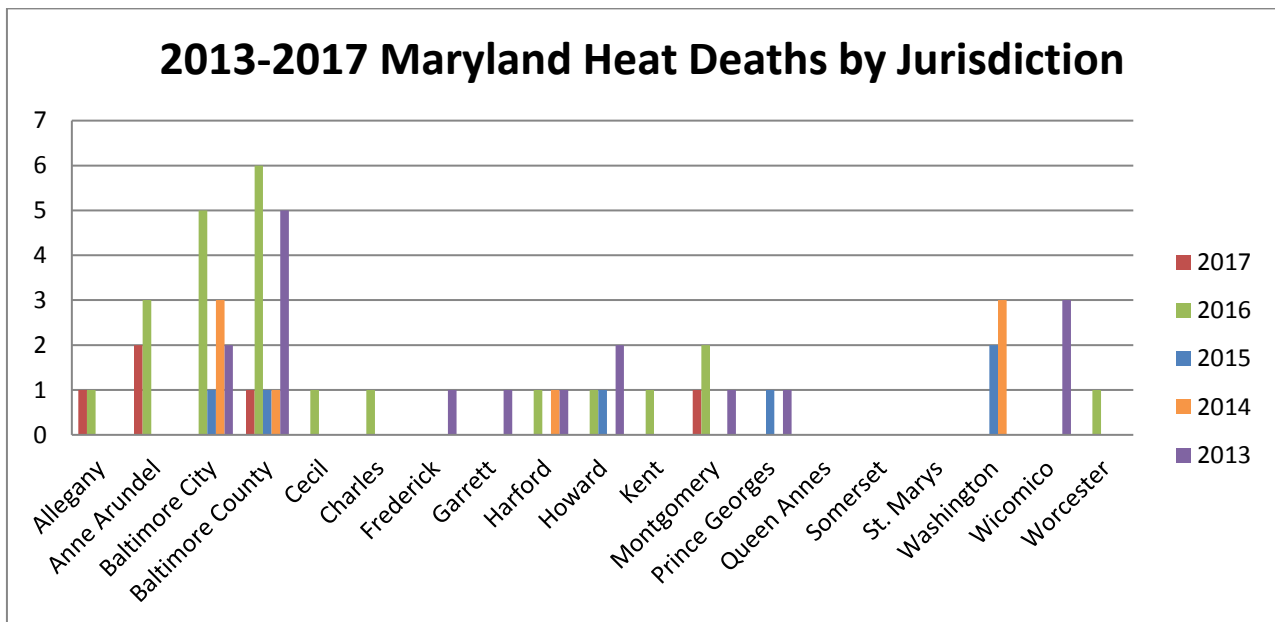
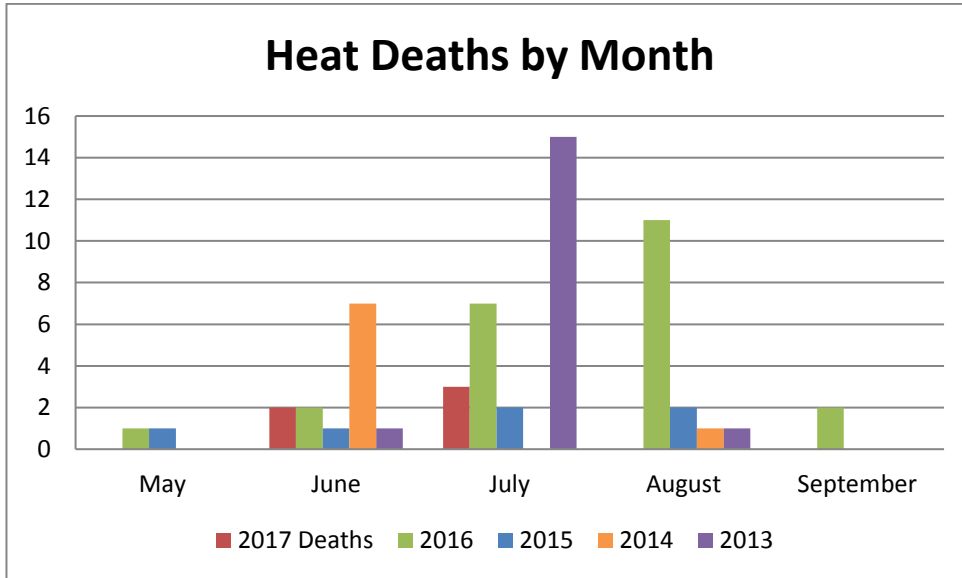


There were a total of 5 heat-related deaths in Maryland during the 2017 heat monitoring period.



Trends in Heat-related deaths (2013-2017)

There were 17 heat-related deaths in Maryland during the 2013 heat monitoring period, 8 heat-related deaths during the 2014 heat monitoring period, 6 heat-related deaths during the 2015 heat monitoring period, and 17 heat-related deaths during the 2016 heat monitoring period. There were a total of 5 heat-related deaths in Maryland during the 2017 heat monitoring period.



For media inquiries, please contact the Office of Communications: [410-767-6490](tel:410-767-6490)

Heat Advisory criteria: The National Weather Service will issue a Heat Advisory when the heat index value is expected to reach 105 to 109 degrees within the next 12 to 24 hours. A Heat Advisory may be issued for lower criteria if it is early in the season or during a multiday heat wave. NWS will issue an Excessive Heat Warning when the heat index value is expected to reach or exceed 110 degrees within the next 12 to 24 hours. An Excessive Heat Warning may be issued for lower criteria if it is early in the season or during a multiday heat wave.

Emergency Department Data: The results from the query used in ESSENCE, an electronic biosurveillance system, to track heat-related illnesses may be an overestimation of the actual burden of illness related to the hot weather. This overestimation is due to the nature of the query, which includes the term dehydration, a condition that may be caused by factors other than heat.

Emergency Medical Services (EMS) Data: These data are based on EMS pre-hospital care reports where the EMS provider has selected “Heat Exhaustion/Heat Stroke” and/or “Hyperthermia” as a primary or secondary impression a patient’s illness. This impression is solely based on the signs and symptoms seen by the provider, not on any diagnostic tests. Since these numbers do not include all primary or secondary impressions that may be seen with heat exposure the actual numbers may be low. These data are reported for trending purposes only.

Suspected Homeless Death Data: Office of the Chief Medical Examiner (OCME) Field Investigators use the U.S. Department of Health and Human Services (HHS) [homeless definition](#) to determine suspected homeless deaths. Homeless deaths are listed as suspected due to the limited information available to the Field Investigators at the time of investigation, which may result in some misclassifications.

Prepared by:

Office of Preparedness and Response
Maryland Department of Health
300 W. Preston Street, Suite 202
Baltimore, MD 21201

<http://preparedness.health.maryland.gov>

Kristin A. McMenamin, MS
Special Projects Coordinator
Office: 410-767-6201
Email: Kristin.McMenamin@maryland.gov

Adejare Atanda, BDS, MPH, CPH
Biosurveillance Epidemiologist
Office: 410-767-5668
Email: Adejare.Atanda@maryland.gov

Jessica Goodell
Epidemiology Field Assignee
Office: 410-767- 6745
Email: Jessica.Goodell@maryland.gov

Sara Barra, MS
Chief Planner
Office: 410-767- 8438
Email: Sara.Barra@maryland.gov

Joseph Anelli, MS
Emergency Operations Manager
Office: 410-767-6434
Email: Joseph.Anelli@maryland.gov

Carin Morrell
Public Information Officer
Office: 410-767-0590
Email: Carin.Morrell@maryland.gov

